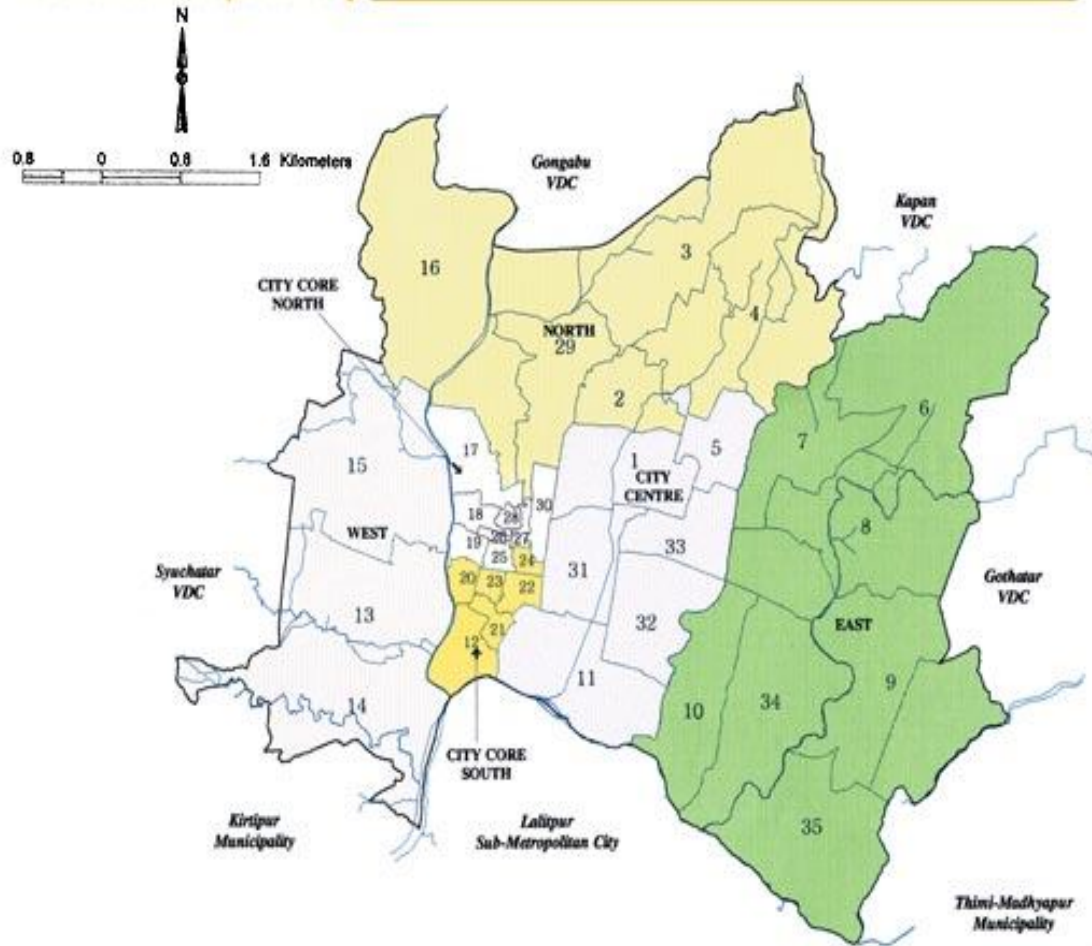


The background features several large, stylized, overlapping swirls in shades of purple, green, and light blue. Interspersed among these swirls are numerous small, yellow, triangular shapes, some pointing upwards and others downwards, creating a dynamic and celebratory feel.

Rainwater Harvesting Initiation in Kathmandu Metropolitan City

Er. Indra Man Singh Suwal
Divisional Head
Urban Development Department, KMC

Kathmandu Metropolitan City



Map of Kathmandu Metropolitan city

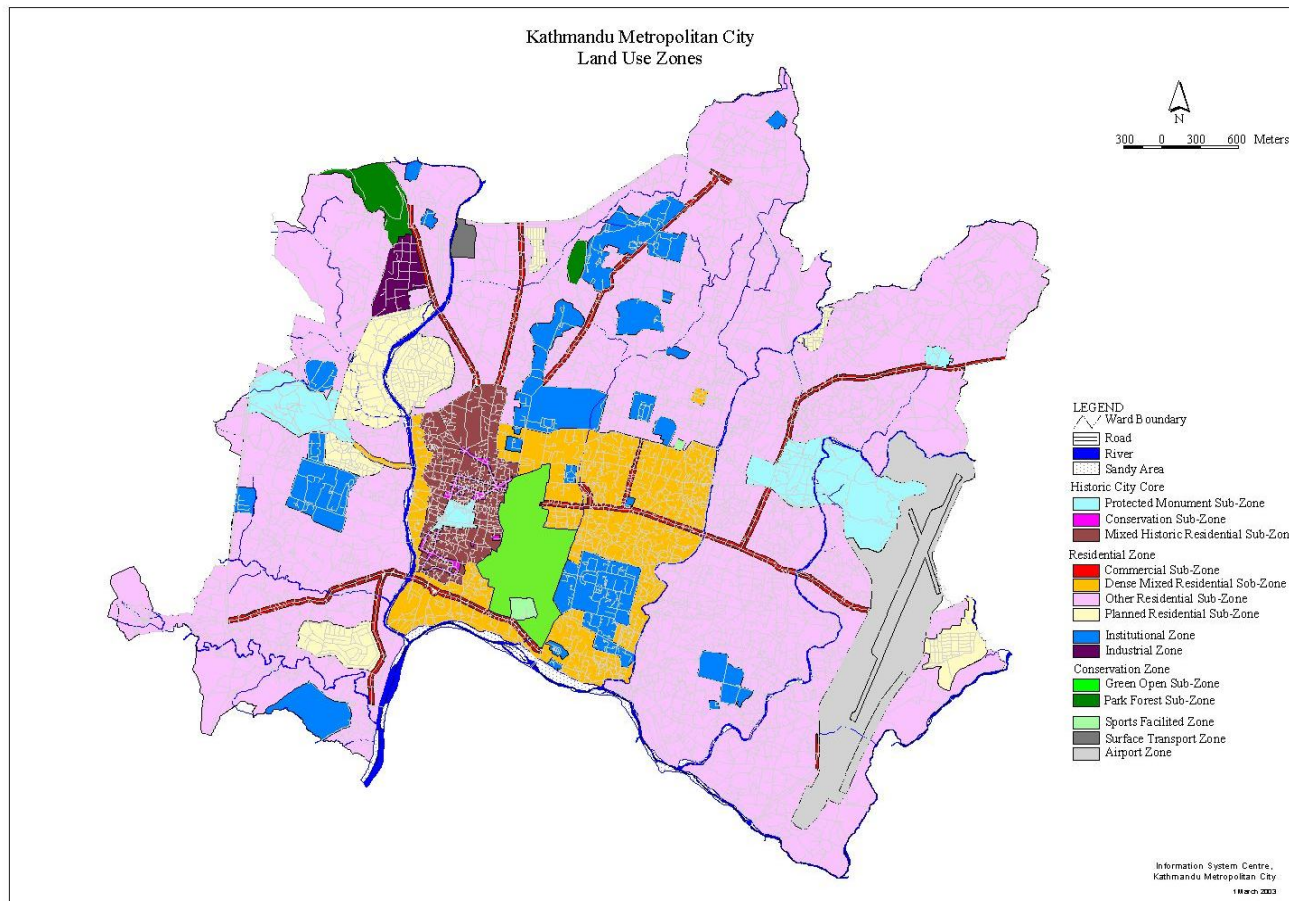


City at Glance

- Kathmandu Metropolitan City is the capital of Nepal
- Population- 975,5453 (census 2011)
- Households – 254,292 (in 2011)
- Population Growth - 5.2%
- Area of KMC - 51 sq. km
- Commercial & Political Hub
- Divided into political 35 wards
- No major industries within the city.

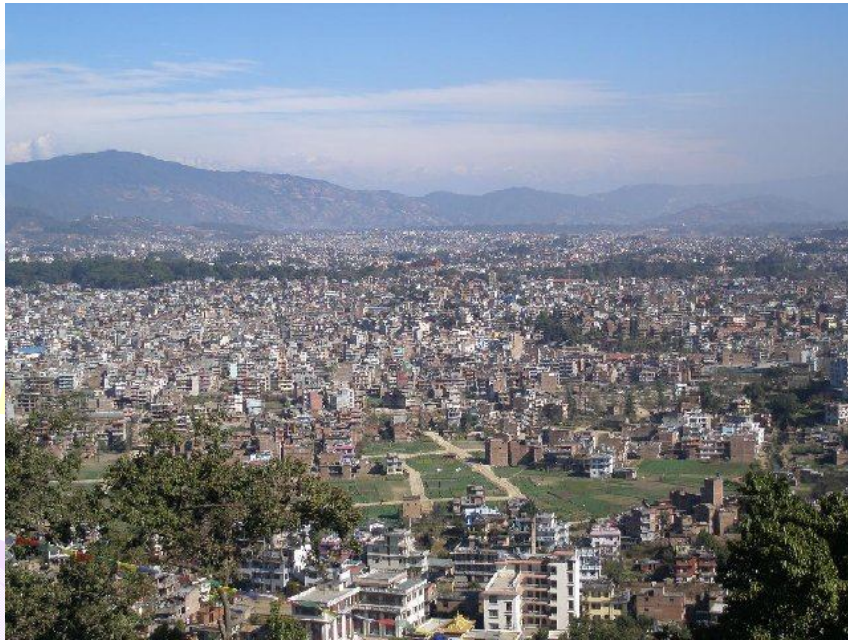
Existing Land Use of KMC

Integrated Action Plan of KMC in 2001 prepared the prevailing land use of Kathmandu.



Urban Sprawl in Kathmandu City

10 year old



Today





Policy intervention on rainwater utilization in KMC

- Residential buildings with rainwater harvesting facilities will get rebate of 10% of building permit fee.
- Mandatory to install RWH with built up areas of 10000 sq.ft. or above.
- Promote groundwater recharge system in courtyard to control surface run off.
- Restoration and conservation of the traditional ponds to augment the ground water table

Demonstration and Awareness

Maru Hiti



Banja Hiti





Scale up

- Public awareness
- Incentive to the sustainable behavior
- Technical capacity at the municipal level
- Rainwater friendly regulations
- Plumbing code formulation
- Partnership with building contractors/designers