



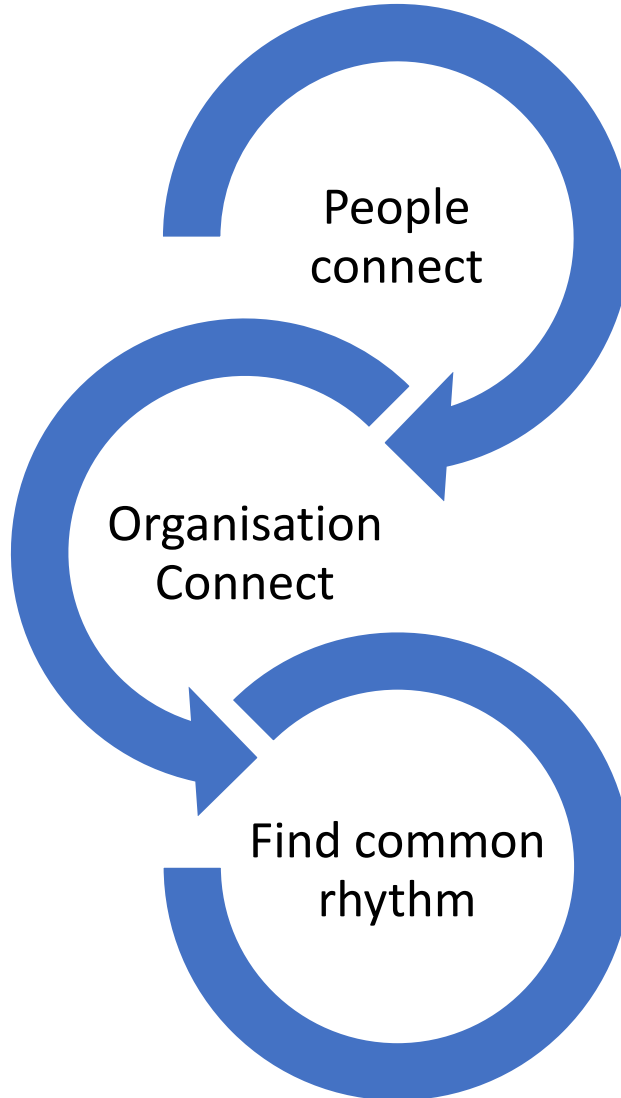
# Growing impact of WSD

JN Bhagwan

Water Research Commission

June 2020

# How it all started





# Activities

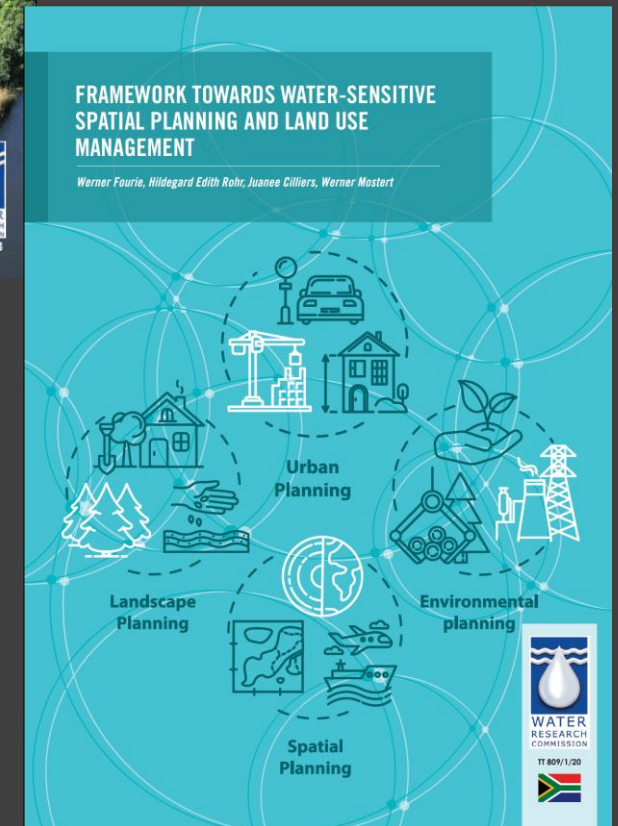
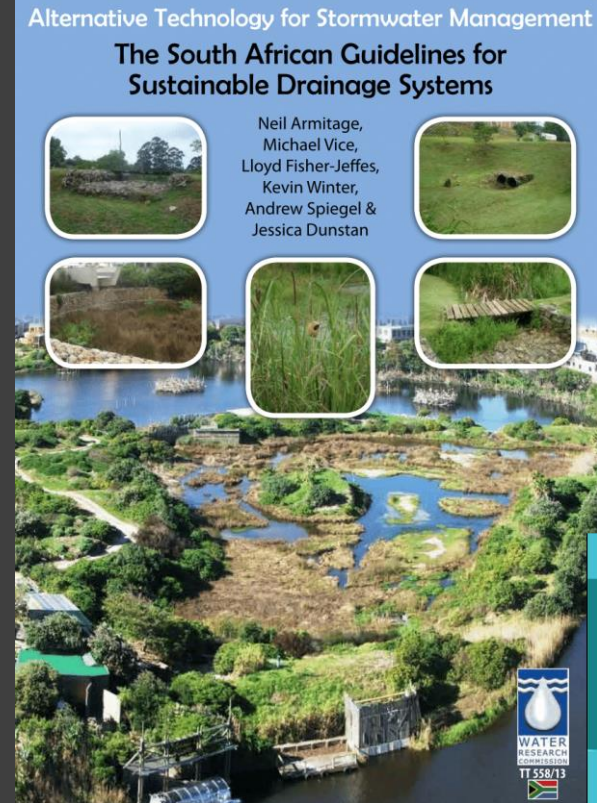
---

- WSD
- Low cost wastewater solutions
- SFDs
- Knowledge management and creative journalism
- Strategic platforms
  - SIWI
  - WRC Symposium
  - CSE Events
  - IWA



# UNIQUE PROPOSITION

- Using the strength of WRC research and innovation products
- Using the strengths of CSE capacity building tools and models
- Linking resources in both countries and continents – UCT, I Consulting etc.etc.
- Taking Africa on this journey. – Namibia, Kenya, Tanzania.....







**Example of a detention pond at The Falls Pick 'n Pay, Roodepoort (Photo: D Ellis)**



**Bio-swales collect and treat stormwater from The Falls Pick 'n Pay parking area for later use as irrigation water (Photo: D Ellis)**



**Figure 4-20: Basic layout of DEADP roof garden showing different sections (Source: Western Cape DEADP)**



**Figure 4-21: View of completed roof garden (Source: Western Cap)**



**Figure 4-22: Views of the eThekweni Green Roof Pilot Project**

# Higher level initiatives gathering momentum



CITY OF CAPE TOWN  
ISIXEKO SASEKAPA  
STAD KAAPSTAD



Making progress

- ESETA
- Human Settlement Policy
- Demonstrations
- Water Plan
- Smart City

## COMMITMENT 5:

### A WATER-SENSITIVE CITY

The City will actively facilitate the transition of Cape Town over time into a water-sensitive city with diverse water resources, diversified infrastructure and one that makes optimal use of stormwater and urban waterways for the purposes of flood control, aquifer recharge, water reuse and recreation, and that is based on sound ecological principles. This will be done through new incentives and regulatory mechanisms as well as through the way the City invests in new infrastructure.



## Water Security Perspective for the Gauteng City-Region

*Securing water for continued growth and well being*

Final Draft, August 2019

Our work has only  
started.....thank you