



TN

TAMIL NADU

US

URBAN SANITATION

SP

SUPPORT PROGRAMME

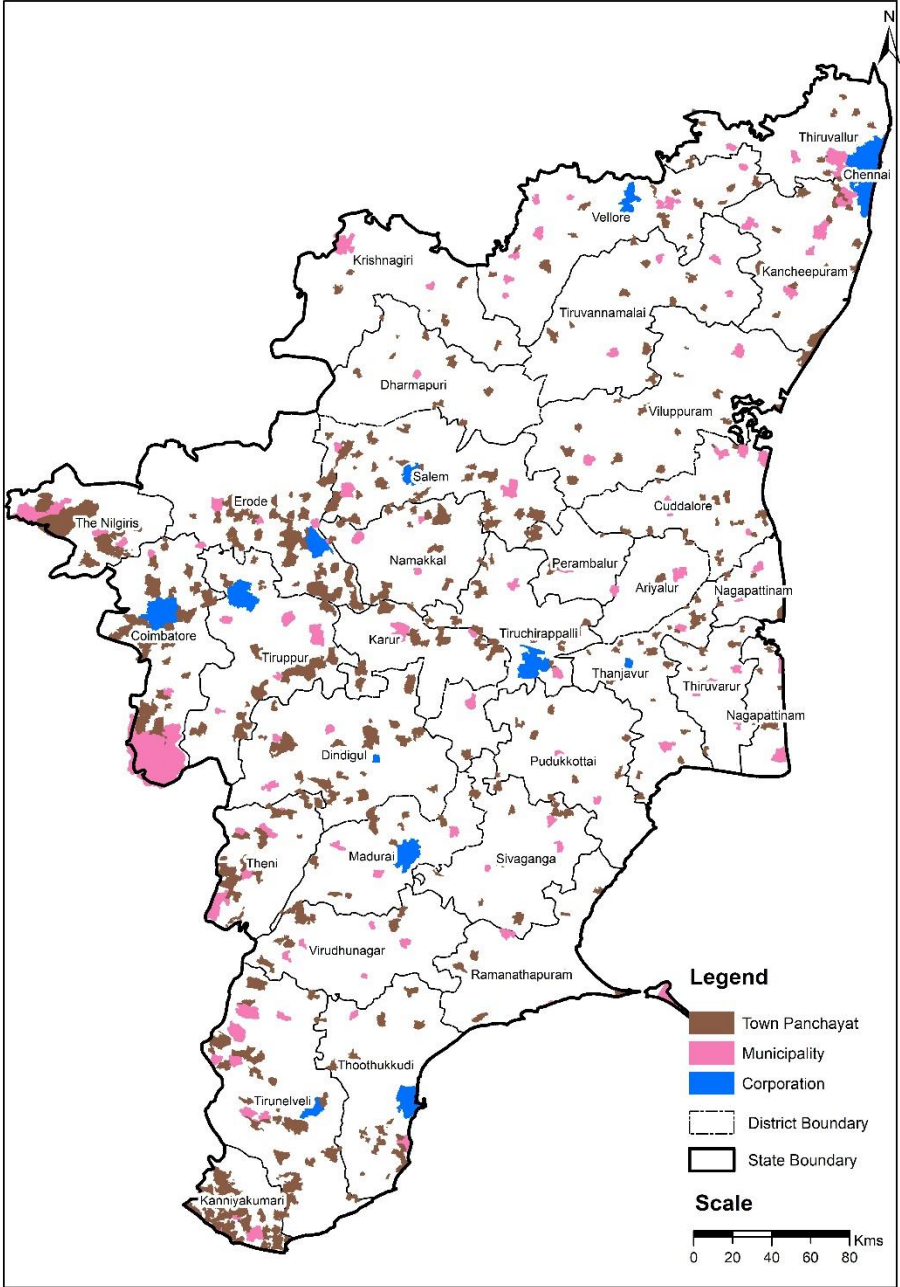
iihs[®]
INDIAN INSTITUTE FOR
HUMAN SETTLEMENTS

In Association With:



Urbanisation Structure in Tamil Nadu

Urbanisation Structure in Tamil Nadu				
Sl.No	Urban Local	No.	Population	% of Population
1	Corporations	12	1,34,28,002	43%
2	Municipalities	124	96,84,799	32%
3	Town Panchayats	528	80,90,847	25%
	Total	664	3,12,03,648	100%
Source : Census 2011				



Sanitation Arrangements in Tamil Nadu

Sanitation Arrangements in Tamil Nadu			
Sl. No	Description	Total	%
I	Households with individual Toilets		
1	Households with sewer connections	23,99,981	30%
2	Septic tanks + Improved Pit Latrine	34,76,616	43%
3	Other Individual Toilets (Other systems, without slab/open pit, night soil disposed into open drain, night soil removed by human, night soil serviced by animals)	2,65,537	3%
	Total Households with individual Toilets	61,42,472	76%
II	Households using Public Toilets	7,16,475	9%
III	Open Defecation Households	11,73,543	15%
	Total Urban Households (Census 2011 with merged Local Bodies)	80,32,610	100%
Source : Census 2011			

Open Defecation – Urban Tamil Nadu

% of open defecation households - **10.7%**

Source: Swachhta Status report, 2016-2017

Conveyance

Good quality trucks and robust informal market

Treatment Facilities

Number of existing STPs – **54**

Capacity of existing STPs – **1,414 MLD**

Number of cities having STPs – **38**

Number of FSTPs - **1**

Capacity of FSTP – **23 KLD**

TNUSSP: Supporting Tamil Nadu's Total Sanitation Mission

Muzhu Sugadhara Tamizhagam

- Strong Commitment to Urban Sanitation at State Level

- First State to issue

Operative Guidelines for septage management

(Sept, 2014)

- Cluster approach
- Co-treatment



Design & Construction of Septic Tanks



Septic Tank Pumping & De-sludging



Septage Transportation



Treatment & Septage Disposal



Fees / Charges for Collection, Transportation & Treatment



Information Education & Communication



Record Keeping & Reporting (MIS)

Source: http://www.tn.gov.in/dtp/gorders/maws_e_106_2014_Ms.pdf

Financing FSM Value Chain

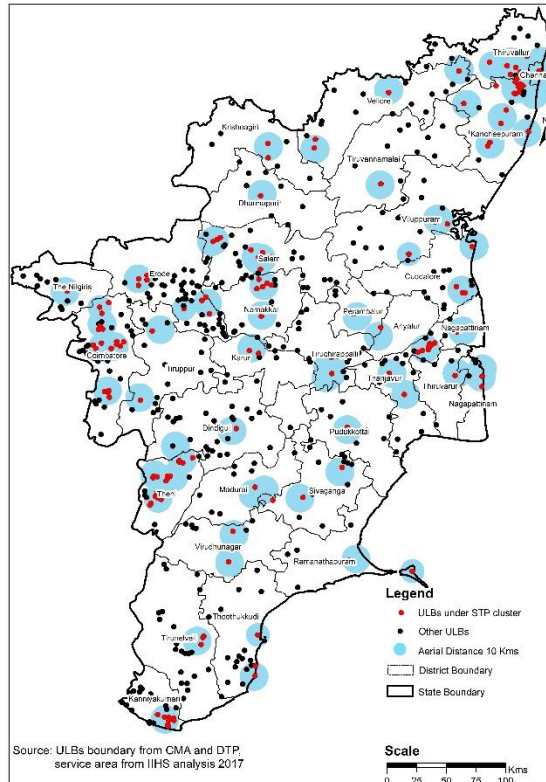
S. No.	Value Chain	Item	CAPEX	OPEX
1	Access	Construction of Toilets	Household, with support from govt.	Household
2	Safe Containment	Construction of Septic Tanks	Household with support from govt.	Household
3	Conveyance	De-sludging Trucks	Private Sector	Private Sector
4	Treatment	FSTPs/STPs	Govt.	Govt./ User
5	Treatment	Decanting/Pumping stations	Govt.	Govt. / User
Source: TNUSSP Analysis, 2018				

TN Phase Wise Scaling-up plan for FSM Coverage in ULBs

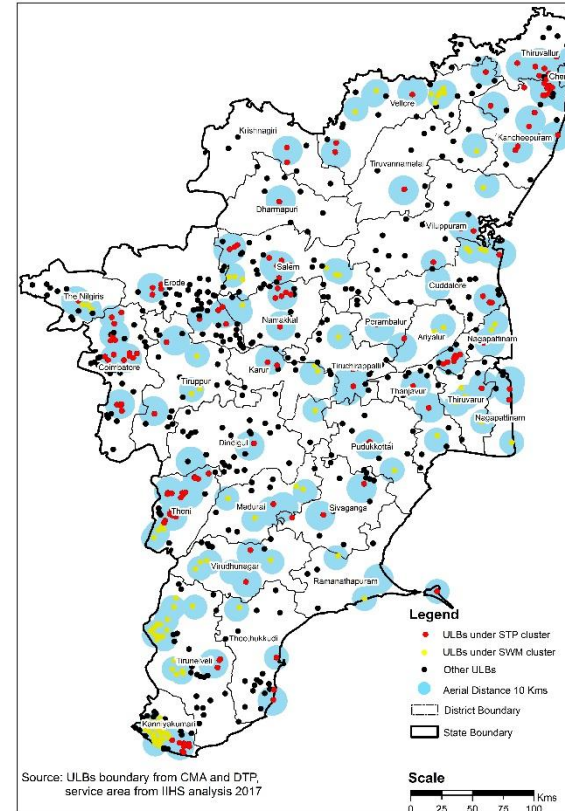
Suggested phase-wise coverage of ULBs for FSM

1. **Phase I and II** co-treatment at STPs in all ULBs.
2. **Phase III** Municipalities with Solid Waste Management (SWM) sites.
3. **Phase IV** Town Panchayats land secured within Resource Recovery Parks (RRP).
4. **Phase V** ULBs not falling in any of the above clusters.

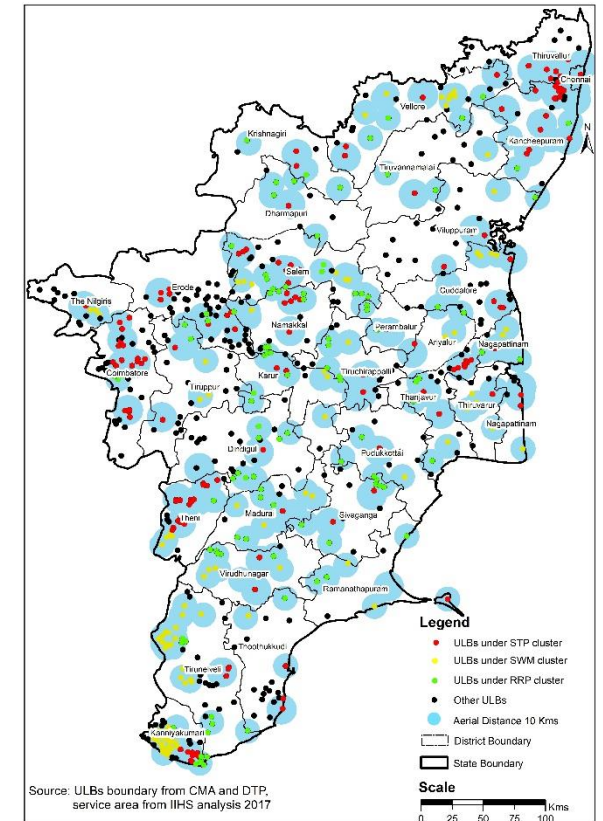
Phase I and II



Phase III

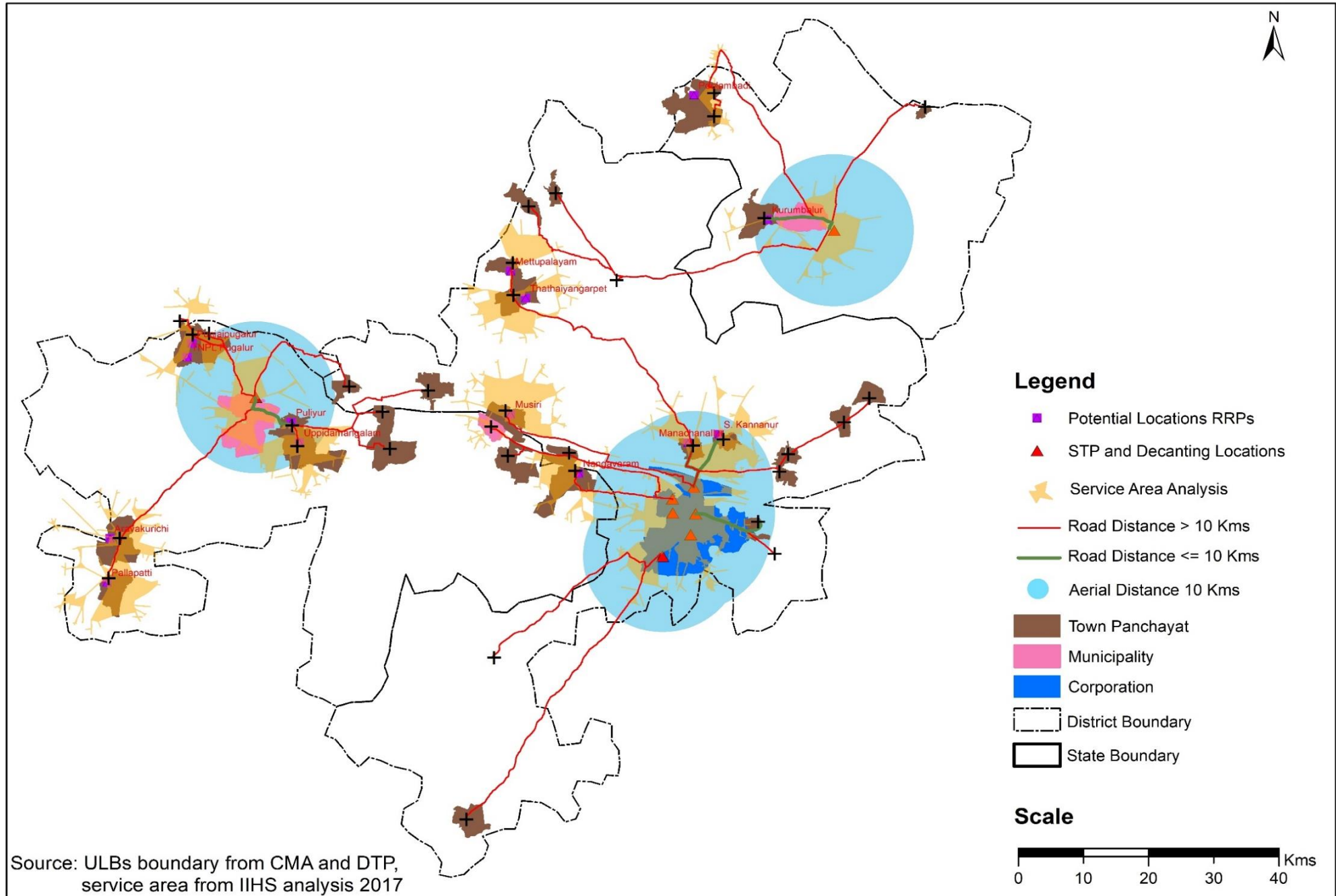


Phase IV



●	STP Cluster ULBs	●	Other ULBs	●	SWM Clusters	●	RRP Clusters
	Aerial Distance 10 km		District Boundary		State Boundary		

Cluster Approach - Closest Facility analysis



TN Phase Wise Scaling-Up Plan For FSM Coverage in ULBs

Anticipated roadmap for coverage of urban population (excluding Chennai)							
No.	Details	P1	P2	P3	P4	P5	Total
1	No. of STP/FSTP locations	41	34	49	78	157	353
2	City Coverage-						
2.1	Corporations (excl. Chennai)	8	3				11
2.2	Municipalities	26	30	51		17	124
2.3	Town Panchayats	35	53	59	111	270	528
2.4	Total cities covered	69	86	110	111	287	663
3	Households Coverage-	26,80,950	13,39,048	9,48,335	4,53,617	12,25,728	66,47,678
3.1	HH covered under UGSS	8,46,610	1,95,131				10,41,741
3.2	HH covered under FSTP	18,34,340	11,43,917	9,48,335	4,53,617	10,56,512	54,36,721
4	Population Coverage	103,48,467	51,15,163	36,90,113	17,50,962	47,47,182	256,50,797
5	Cumulative population coverage	40%	60%	75%	81%	100%	
6	Investment (Crores)		4.25	217			

Conclusion

1. Maximising utilization of existing facilities
2. Creating stand-alone facilities
 - Land availability
 - Existing capacities to run the facility
 - Co-composting



Thank You