

A **DownToEarth** ANNUAL

STATE OF INDIA'S ENVIRONMENT 2026 IN FIGURES

CLIMATE
HEAT
INTERNAL DISPLACEMENT
AIR POLLUTION
AGRICULTURE
FOREST & BIODIVERSITY
ENERGY
FERTILITY
WASTE

FOCUS

State of States ■ State of Health ■ State of Water ■ State of Extreme Weather

+

ALL PREVIOUS EDITIONS ■ QUICK ACCESS TO DATABASE ■ DATA INSIGHTS



DownToEarth
www.downtoearth.org.in

CSE | DOWN TO EARTH
DATA CENTRE



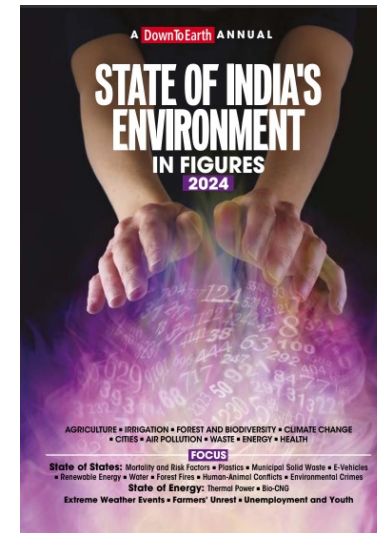
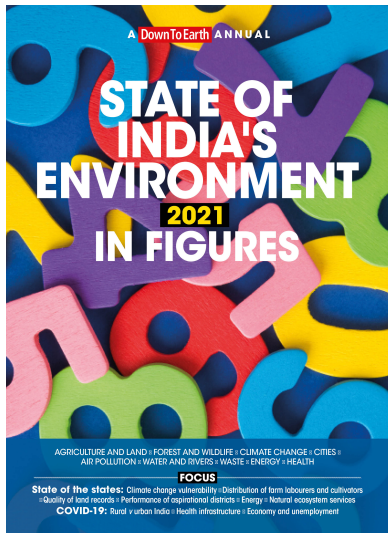
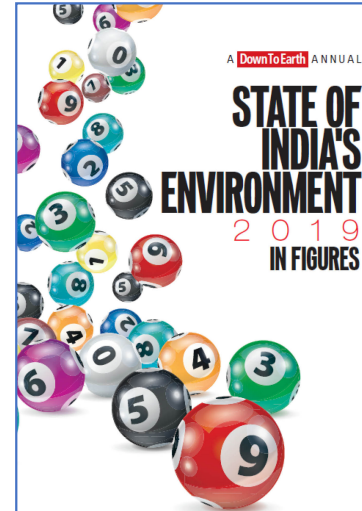
What the numbers tell us

Richard Mahapatra

Managing Editor
Down to Earth

In data, we trust

- The annual **data-centric evaluation** of state of affairs in environment and development. This is the **11th edition**
- Data released round the year remain **cold statistics**, if not processed to tell the **larger story**
- The DTE-CSE researchers and journalists collate and comprehend data from **over 120 sources**, all credible and government surveys/census
- They are processed and presented in this report, but with the sole objective: **What is the status?**



State of **states**

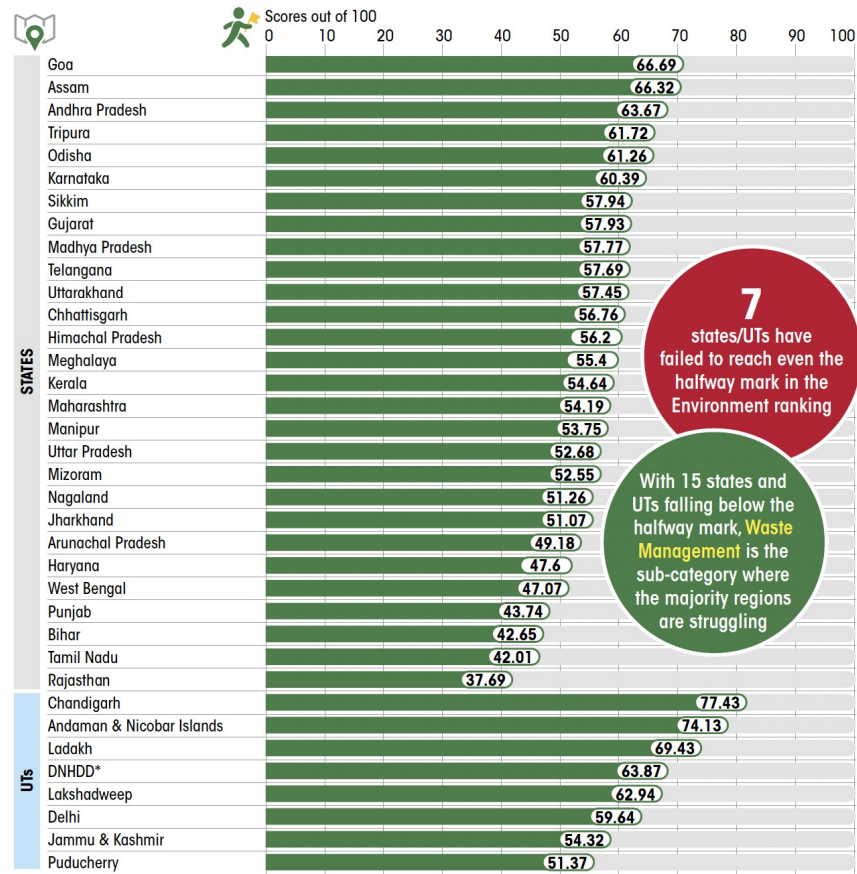
- This year's *SoE In Figures* evaluates states on **environment and development** performances
- There are many indexes that hit us every year, but they are not understood/read together to assess
- **Development is multi-dimensional**; we need to analyse all data on all aspects environmental and developmental to reach to a conclusion on progress
- The ranking of states is based on four themes—**environment, agriculture, public health and public infrastructure & human development**
- The ranking looks at 48 **indicators**
- All the data come from government sources; and the methodology used to assess is widely used for various rankings by the government across the world

ENVIRONMENT

Goa, the top-ranked state, excels in the Climate sub-category due to its high share of new renewable sources in power generation. However, challenges like forest cover change over the past decade, sewage treatment, and management of polluted river stretches persist



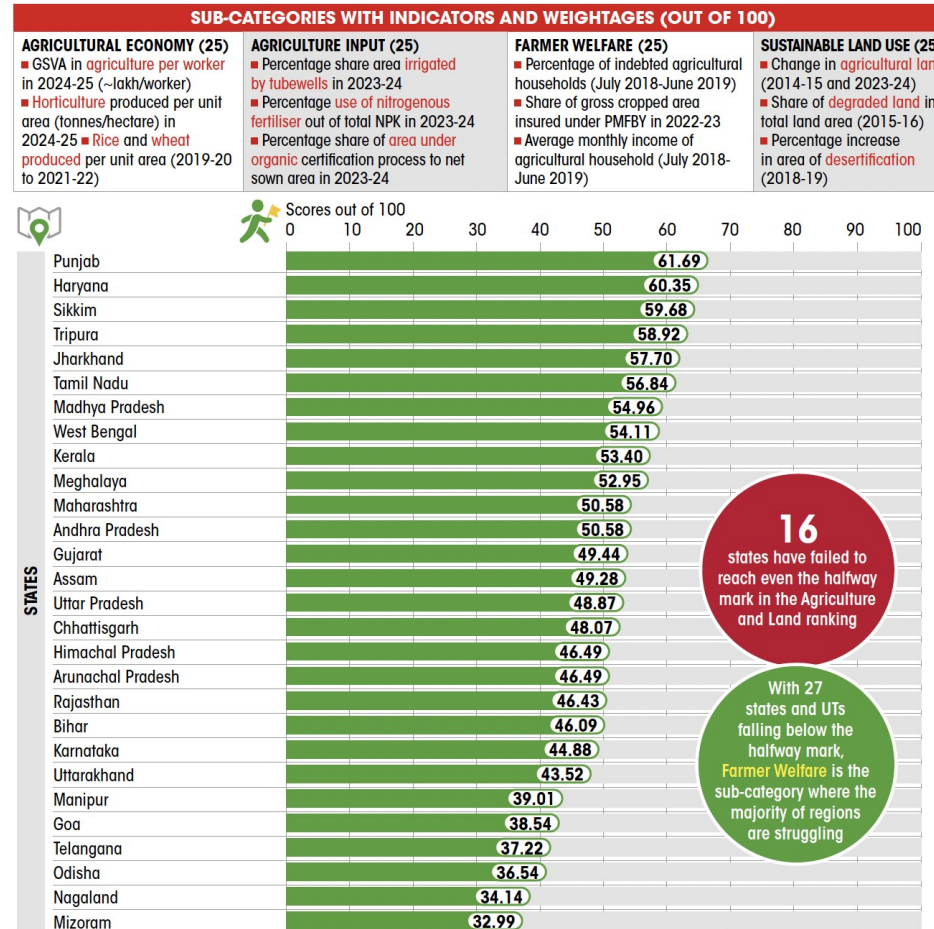
INDICATORS AND THEIR WEIGHTAGES (OUT OF 100)			
FOREST AND BIODIVERSITY (25)	CLIMATE (OUT OF 25)	WASTE MANAGEMENT (25)	WATER RESOURCES (25)
<ul style="list-style-type: none"> Crimes registered under environment, pollution acts (2024) Tree and forest cover (2023) Forestland diversion (2024-25) Decadal change in forest cover 	<ul style="list-style-type: none"> Extreme weather event days in 2025 Per capita fossil fuel consumption (2024-25) % of new renewables generation (May 2026) Change in budget for natural calamities (2023-24 and 2024-25) 	<ul style="list-style-type: none"> Municipal Solid Waste processed as % of total generated (May 2026) Sewage quantity treated as % of total generated (2020) 	<ul style="list-style-type: none"> Change in number of polluted river stretches in 2025, over 2018 Stage of groundwater extraction in 2025



*Dadra and Nagar Haveli and Daman and Diu

AGRICULTURE AND LAND

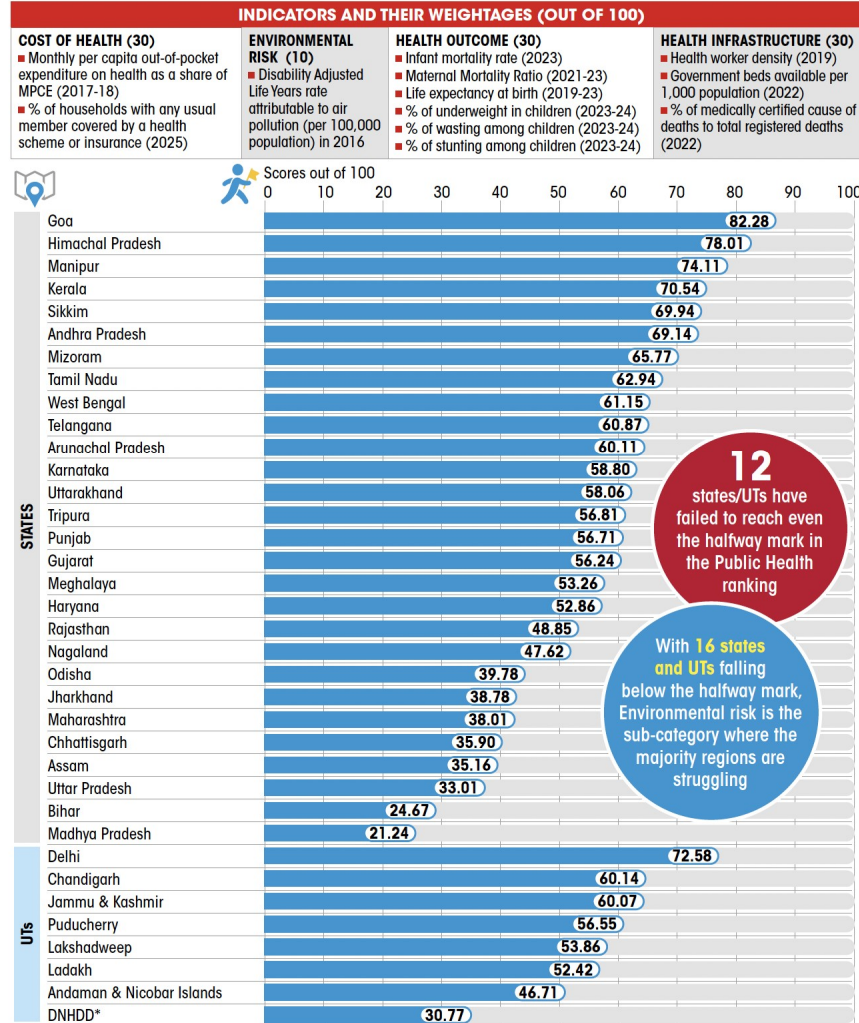
Punjab, which tops the rankings, performs strongly in the Agricultural Economy sub-category. However, it lags in the Agriculture Input sub-category due to its high dependence on nitrogenous fertilisers and relatively weak performance on organic farming indicator



GSVA: Gross State Value Added; Agriculture and Land ranking does not include the UTs, due to limited availability of data

PUBLIC HEALTH

Goa, which tops the ranking, is the only state where all registered deaths are medically certified with a known cause of death. However, the state faces a shortfall in government hospital beds per 1,000 population



STATE OF STATES

PUBLIC INFRASTRUCTURE & HUMAN DEVELOPMENT

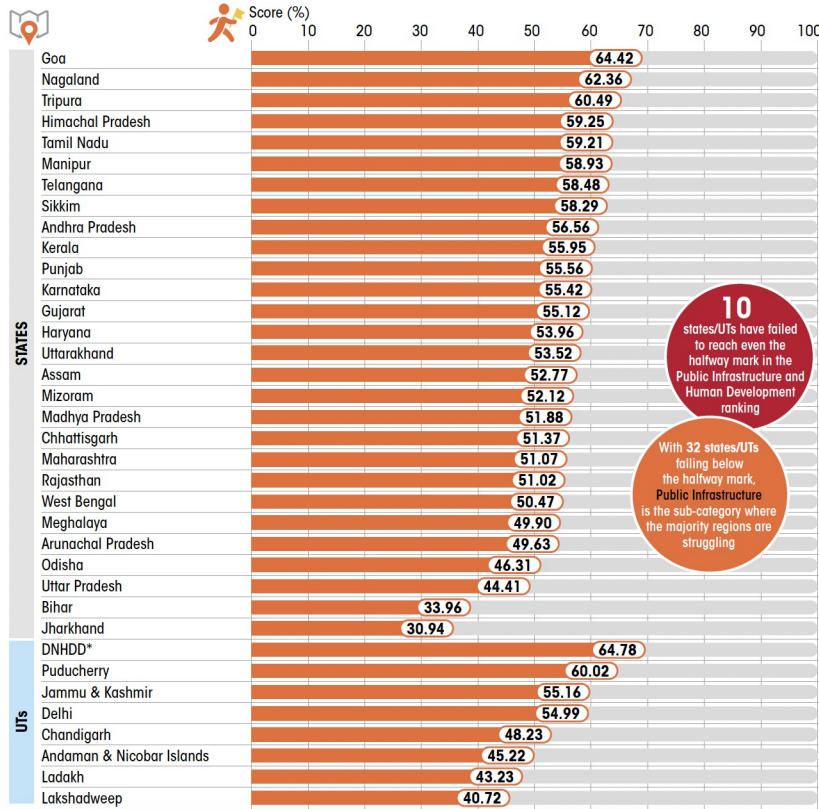


Even though Goa tops the ranking, it faces challenges in indicators under public infrastructure and human development sub-categories. For instance, women's labour force participation saw a low score



INDICATORS AND THEIR WEIGHTAGES (OUT OF 100)

PUBLIC INFRASTRUCTURE (25)	GENDER (25)	EDUCATION AND UNEMPLOYMENT (25)	POVERTY AND INEQUALITY (25)
<ul style="list-style-type: none"> Road length (km) per 1,000 population (2019-20) Per capita availability of power (2024-25) % households living in <i>kachha</i> houses (2019-21) 	<ul style="list-style-type: none"> Sex ratio at birth for children (2023) Ratio of female to male earnings received among wage/salaried employees (2024-25) Ratio of female to male Labour Force Participation Rate (2024-25) 	<ul style="list-style-type: none"> Retention rate at Higher Secondary School Level (2024-25) Retention rate at Primary School Level (2024-25) Unemployment rate among graduates (2024-25) % of workers engaged in informal sector in non-agriculture sector (2024-25) 	<ul style="list-style-type: none"> Head count ratio, Multidimensional Poverty Index GINI coefficient (2022-23)



10 states/UTs have failed to reach even the halfway mark in the Public Infrastructure and Human Development ranking

With 32 states/UTs falling below the halfway mark, Public Infrastructure is the sub-category where the majority regions are struggling

*Dadra & Nagar Haveli and Daman & Diu

State of states: Key messages

- **Intents** visible, but implementation?
- Even the **top-ranked states** in each theme are **struggling** in crucial indicators. Unevenness of progress even within a single theme
- **None** of the states **perform well across all four themes** that are critical for sustainable development
- Regional **disparity**: No single state dominates across all four key themes
- The most **populous states are missing** from top ranks
- **Small states** seem to be performing **well in the rankings** on four themes

More to come...

- The *State of India's Environment 2026: In Figures* covers more themes: **climate, extreme weather, heat, internal displacement, energy, health, water, environmental crime, agriculture, fertility**
- In each of these themes, there are messages that come as a warning

Let's look at the **findings**....