

JAMALPUR

CITY PROFILE

Population: 130,530

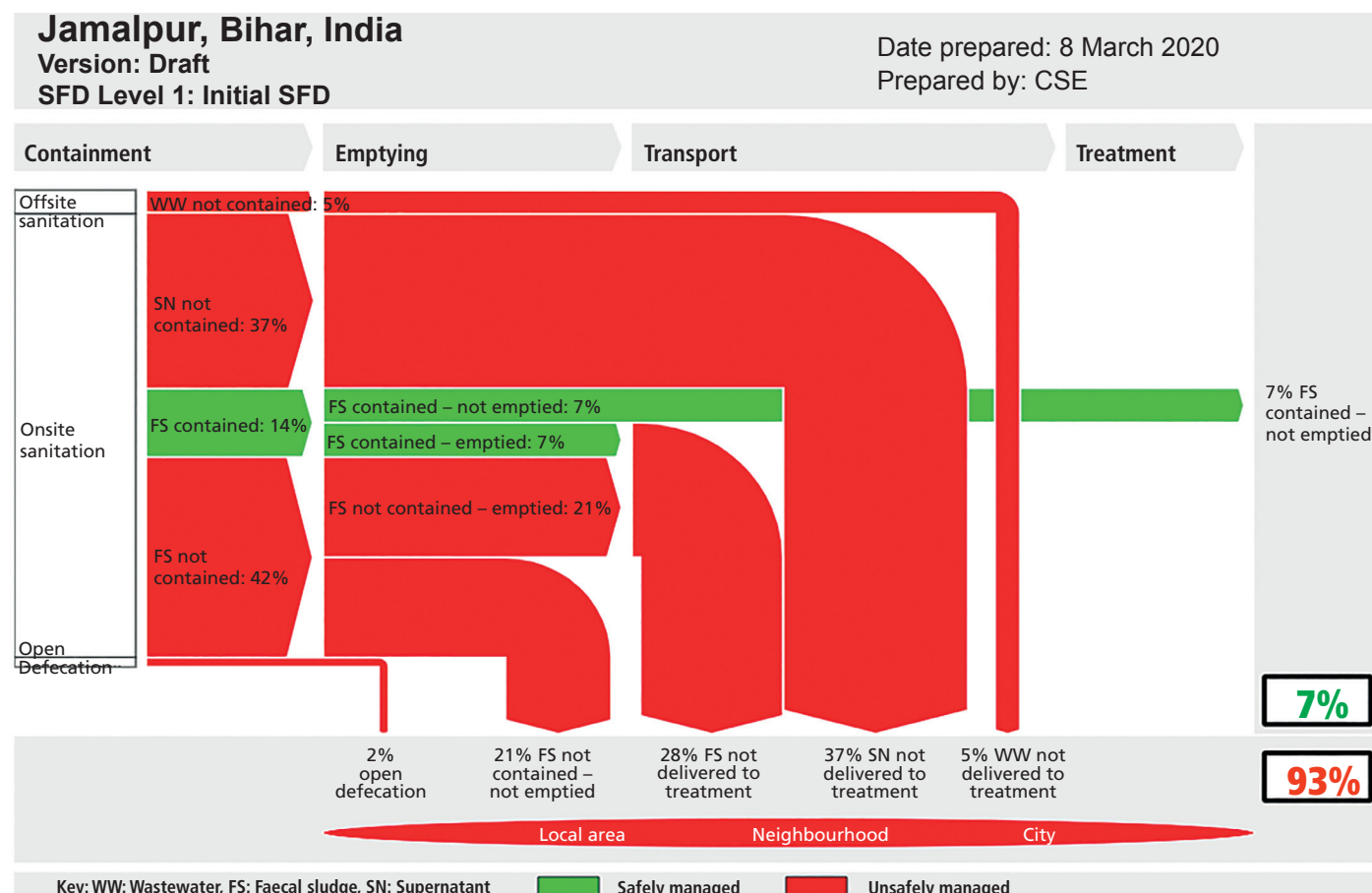
Municipal area: 10.65 sq. km.

Local government:

Jamalpur Nagar Parishad

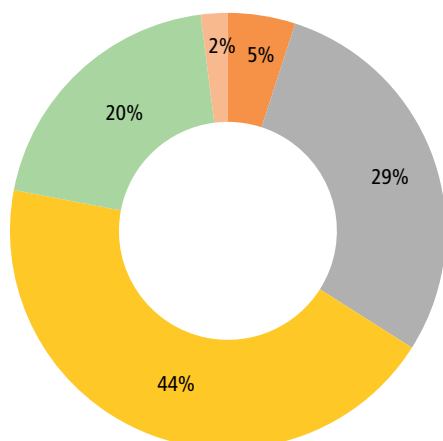
Jamalpur is also known as the 'Rail city' of Bihar, located in Munger district and a few kilometres away from the Munger town. Jamalpur was established during the British rule for manufacture and repair of wagons, coaches, cranes and jack. The city is located at a distance of 170 km east of Patna and 470 km North West of Kolkata.

SFD graphic



Service outcomes

Containment



- Toilet discharges directly to open drain or storm sewer
- Septic tank connected to an open drain or storm sewer
- Fully lined tank connected to open drain or storm sewer
- Lined pit with semi-permeable walls & open bottom, no outlet or overflow, where there is a 'significant risk' groundwater pollution
- Open defecation



Figure 1: Lined pit with semi-permeable walls and open bottom

Emptying

Service provided by	Government	Private operator
No of vehicles	1	2
Licensed /registered	Yes	–
Record maintained	Yes	–
Fee charged	INR 1,700	INR 5,000 – 6,000
No of manual emptiers	80	
Fee charged by manual emptiers	INR 500 to 800 per feet depth of tank	



Figure 2: Manual Emptying of Fully Lined Tanks

Transport

Type of vacuum tanker	Tractor mounted	Truck mounted
No of vehicles	2	1
No of trips per tanker per day	0.5	
Capacity of vehicle	3,000 L to 5,000 L	–



Figure 3: Government Truck Mounted Vacuum Tanker

Treatment and disposal

Type of waste	Sewage	Faecal Sludge
Treatment facility present	–	–
Type of facility	–	–
Generated	8 MLD	67.44 KLD
Treated	–	–
Designated disposal site	–	–

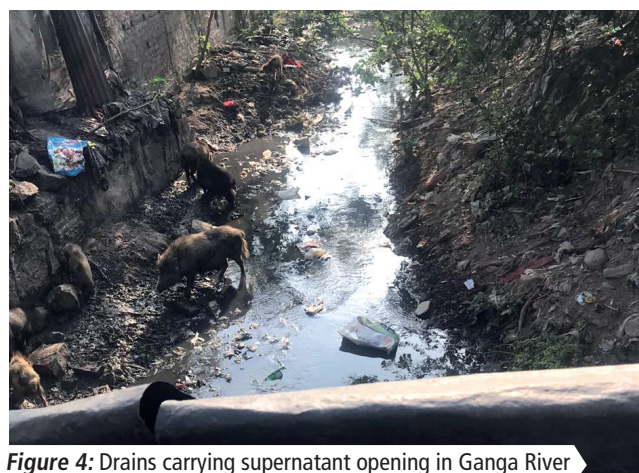
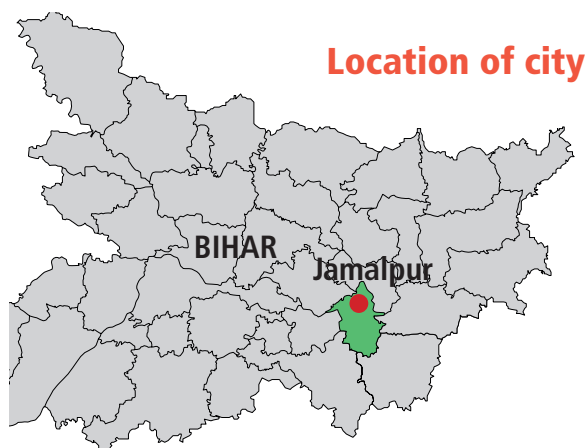


Figure 4: Drains carrying supernatant opening in Ganga River

Source: Data collected by CSE team in February/March, 2020



Location of city