

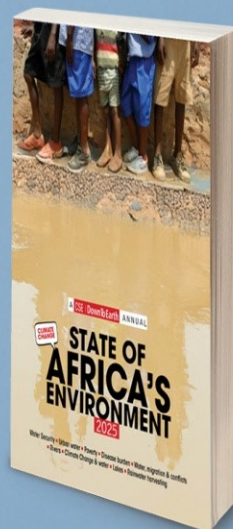


DownToEarth



mesha
Media for Environment, Science, Health and Agriculture

BOOK RELEASE & BRIEFING FOR COMMUNICATORS



STATE OF AFRICA'S ENVIRONMENT

AFRICA AND CLIMATE CHANGE

A world moved-displaced

- 2025-2024: 265 million internal displacement across 210 countries
- UN Refugee Agency: 60,000 displacements/day
- IOM: By 2050, some 200 million additional “environmental migrants”
- Emergency: By 2070, regions like Northern South America, central Africa and northern Australia “too hot to allow human life”

Climate Mobile Continent

- Africa : The “youngest” continent- **19.3 yrs** the **median age** in 2025
- “Many of the Africans alive today may live to see the late decades of this century”
- The youngest continent will have the **most population to endure climate** impacts
- *Nature*: “Those born in 2020 would see twice wildfires/2.8 times crop failure/2.6 times drought/2.8 times river floods/6.8 times heatwaves”

Climate Mobile Continent

- 2021-2025: some **222 million** in Africa affected by weather, climate, water-related disasters
- Disaster-related **deaths**: 28,759, more than **3 times** recorded in 2016-2020
- 2009-2023: **Internal displacement** due to disasters 1.6 million to **6.3 million**
- Flooding account for 75% of this; drought 11%

Nexus: Climate and Conflict

- Live in countries World: 120 million forcefully displaced, 75% in climate impacted countries
- 50% places impacted by both conflict and serious climate hazards (Ethiopia, Sudan, Somalia)
- Countries with conflicts and climate risks reporting more displacement/migration
- In near future: climate hotspots will be same as conflict hotspots

Climate Net

“The Africa Climate Mobility Report”

2050

“Up to 5% of Africa’s population of some 2 billion people could be on the move due to climate change”

This is more than 3 times from current level



DownToEarth

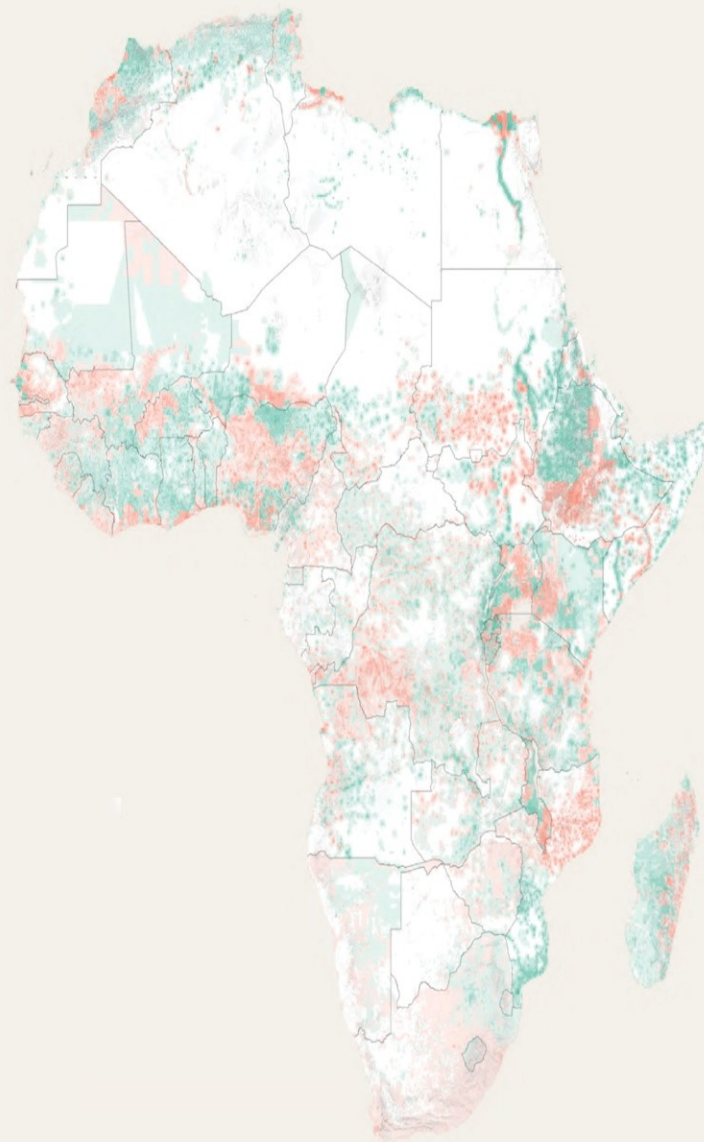


mesha
Made to Environment, Science, Health and Agriculture

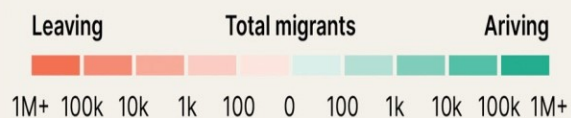
STATE OF AFRICA'S ENVIRONMENT 2025

AFRICA AND
CLIMATE CHANGE

CONTINENTAL HOTSPOTS DEPICTING THE NUMBER OF PEOPLE MOVING OUT OF AND INTO SPECIFIC AREAS OWING TO CLIMATE IMPACTS



Internal climate mobility hotspots by 2050
under the Rocky Road scenario



Source: ACMI Africa Climate Mobility Model, 2022

