

## **MYSURU CITY CORPORATION, MYSURU**



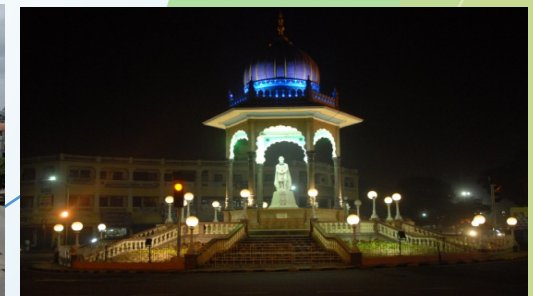
Here's how  
**Mysuru**  
became



**THE FIRST CLEANEST CITY OF INDIA**  
(Second time in a row)

# INTRODUCTION

- Heritage city
- City of Palaces
- Green city
- Cultural city
- Royal city
- Retired people's paradise
- Most livable city



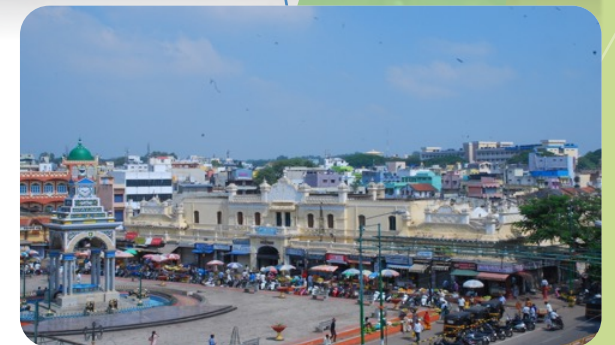
## CITY PROFILE

- **Mysuru is the second largest city in the state of Karnataka**
- **Capital of the former princely state of Mysore.**
- **Spread across an area of 128.42 km<sup>2</sup>**
- **An educational, commercial and administrative center, along with tourist and shopping center.**
- **140 km from Bangalore**
- **Tourism is the major industry, while IT Sector has emerged as a major employer alongside the traditional industries.**



## PLANNING & DEVELOPMENT

- Planned Mysuru City started in middle of 19th Century.
- Municipal Committee in 1862.
- Sanitary Division in 1885
- The City got India's First urban planning body in 1903 – The City Improvement Trust Board.
- Street lights were provided in 1908.
- UGD system introduced in 1910. Comprehensive drainage scheme was prepared and executed by Sri. M. VISWESWARAIAH the then Chief Engineer between 1908 and 1910.
- Status of City Corporation from 10.6.1977.
- At present Mysuru City Corporation governed by KMC Act 1976



# CULTURE, TOURISM & ATTRACTIONS

- The cultural ambience and achievements of Mysuru earned it the sobriquet Cultural capital of South Karnataka
- Famous for cultural festival namely Dasara
- Close to 200 structures in the city with a heritage tag
- With about 3 million visitors every year, Mysore is one of the most visited cities in India.
- Rich in picturesque scenic spots, along with architectural and heritage structures
- There are close to about 20+ major tourist attractions in Mysuru



# CITY PROFILE

DETAILS	NUMBER
Population	9,14,919
House Holds	2,06,372
Wards	65
Area	128.42 Sq.km
Total waste generated	402 MT/day
Average Height (Above MSL)	770 mts
Average Rain Fall	798.20 mm
Commercial Establishments	26503
Apartments	184
Properties	1,85,864
Road Length	1850 Kms

DETAILS	NUMBER
Cinema Theatres	18
Worship Places	970
Schools	600
Parks	389
Industries	310
Hospitals/Clinics	1048
Marriage/Function Hall	167
MCC Quarters	262
Municipal Shops	1941
Burial grounds	33
Hospitals/Clinics	1048



## SWACHH SURVEKSHAN AIMED TO STUDY THE PROGRESS OF THE SBM SO FAR ON THE LEVELS OF CLEANLINESS AND SANITATION OF THE CITIES

- The ranking of the cities was based on data collection from 3 sources

Sl No	Source	Scores	Mysuru City Secured	Rankings
1	Service level status	1000	935	Number 1 Total Scores 1749
2	Independent Observation	500	467	
3	Citizen feedback	500	348	

- The performance of each ULB has also been benchmarked across 6 areas of evaluation

Area of Evaluation	Weightage
Strategy for Open Defecation Free town (ODF) and Integrated Solid Waste Management (SWM)	5%
Information, Education and Behavior Change Communication (IEBC) activity	5%
Door to door Collection, Sweeping, Collection & Transportation	40%
Processing and Disposal of Solid Waste	20%
Public & Community Toilet Provision	15%
Individual Toilet	15%

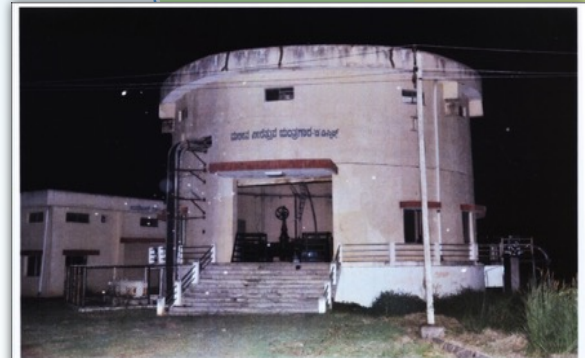
## **MYSURU MADE IT CLEAN BECAUSE**

- Minimum open defecation
- Proper sanitation and hygiene
- Efficient sewerage and drainage system
- Safe, quality and sufficient drinking water supply
- Scientific solid waste management
- Extensive Information, Education and Behavior change Communication (IEBC)activities.



## UNDER GROUND DRAINAGE

- UGD system in city was established during 1910
- City has 98% network coverage
- Based on topography 4 drainage districts are formed
- Each district has independent outfall sewer line
- Laterals & sub-mains, 150 to 250mm dia SW Pipe line is about 1580 Km
- Trunk mains, 300 to 600 mm dia RCC lines 117.60 Km
- Outfall Sewer lines, 600 to 1400 mm dia RCC line 80.90 Km
- Manholes around 62,000 No's
- No. of House Service Connection's are about 2,00,000
- Regular maintenance carried by MCC



S.T.P. A&D District Wet Well at Rayanakere



S.T.P. A&D District Inlet point at Rayanakere



## SEWAGE TREATMENT PLANTS

Location	Extent (Acres)	Capacity (MLD)	Footprint area (Acres)	Aerators	Proposed (MLD)
Rayankere	164	60.00	35	36 Nos – 20 HP	43
Sewage Farm	350	67.65	42	36 Nos – 20 HP	49
Kesare	77	30.00	22	24 Nos – 15 HP	48
Total		157.65			140



STP (Kesare)



STP (Vidyaranyapura)



Facultative Lagoon

## STORM WATER DRAIN

- Mysuru city is having twelve drainage catchments, out of which six are main catchments in the city area. They are,
  - a) Devayyanahundikere catchment (Lingambudhi kere)
  - b) Dalavoykere catchment
  - c) Bannimantapa catchment /Devaraya canal catchment
  - d) Shettykere (Yennehole kere) catchment
  - e) Hebbalkere catchment
  - f) Kemmayyanahundikere catchment
  
- In these, Dalavoykere , Shettykere (Yennehole kere) and Devayyana hundikere catchments run generally from North to South direction dividing the greater part of the city area and clearly demarcating the catchment area into three distinct drainage zones. The length of the drain is around 123.00 km in which primary drain length is around 44.00 km and secondary drain length is around 79.00 km



## STORM WATER DRAIN

- Under Jawaharlal Nehru National Urban Renewal Mission (JnNURM), the Mysuru City Corporation (MCC) has taken up the work of remodeling of two valleys viz. Bannimantapa and Hebbal valley. The remodeling is taken up for a drain length of around 44.00 km in these 2 valleys.
- The impacts of the remodeling of storm water drains are -
  - Removal of flooding problems in low laying areas
  - Improved health and environmental conditions of the people residing adjacent to water ways
  - Minimized mosquito menace
  - Reduced the operation and maintenance of the drain
  - Prevents the encroachments and dumping of waste.



## VEHICLE DETAILS OF UGD

SI No	Type of Vehicles	MCC Owned Vehicles	Out Source Vehicles
1	Jetting machine vehicle	07	0
2	Manhole desilting	04	0
3	Sucking machine vehicle (Cess pool)	02	0
4	Water tanker	01	0
5	TATA Ace	0	23
6	Roding machine	23	0



## PROPOSALS TO IMPROVE THE SYSTEM

- **Machineries**
  - Jetting Machines - 04 Nos
  - De - silting Machines - 09 Nos
- **Trunk Sewers**
  - On-Going - 42 Kms
  - Proposed - 15 Kms
- **Out fall Sewer Lines** - 22 Kms
- **Sewage Treatment Plants** - 10 Nos



## PROPOSED OUTFALL SEWAGE LINES

- Sharadavilas College, Manandavadi Road to Sewage Farm STP-B : Rs. 455.00 Lakhs
- Kukkara halli lake, Bogadhi road to Srirampura H.D.Kote road : Rs. 700.00 Lakhs
- Opp. Royal Inn, K.R.S. road to Kesare STP-C : Rs. 480.00 Lakhs
- Jyothinagar B-block via K.N.pura Ajj Sait road, Udayagiri to Devanur lake : Rs. 290.00 Lakhs
- Rajivnagar Khaif Mosque to Kesare STP-C : Rs. 590.00 Lakhs
- Pulakesi road via Tippu Circle, Shobha garden, Kesare Wetwell : Rs. 380.00 Lakhs
- Saint Joseph Hospital, Bengaluru road to Kesare Wetwell : Rs. 290.00 Lakhs
- Subhashnagar via Kesare, Usmaniya block to Kesare Outfall sewer line : Rs. 225.00 Lakhs
- Ganeshanagar via Devanur lake to Kesare STP-C : Rs. 480.00 Lakhs
- M. G. Koppalu Circle via Abhishek Circle, M.G. Circle to Hebbal Wet well : Rs. 350.00 Lakhs

## PROPOSED SEWAGE TREATMENT PLANTS NEAR LAKES

- Devanur Lake : Rs. 830.00 Lakhs
- Karanji Lake : Rs. 780.00 Lakhs
- Dalvoy Lake : Rs. 830.00 Lahs
- Lingambhudi Lake : Rs. 820.00 Lakhs
- Kukkarahalli Lake : Rs. 805.00 Lakhs
- Hebbal Lake : Rs. 800.00 Lakhs
- Infosys have come forward to develop Hebbal lake by establishing sewage treatment plant using SBR technology of 6.00 MLD capacity near lake under C.S.R.



## WETWELL CUM PUMP HOUSES

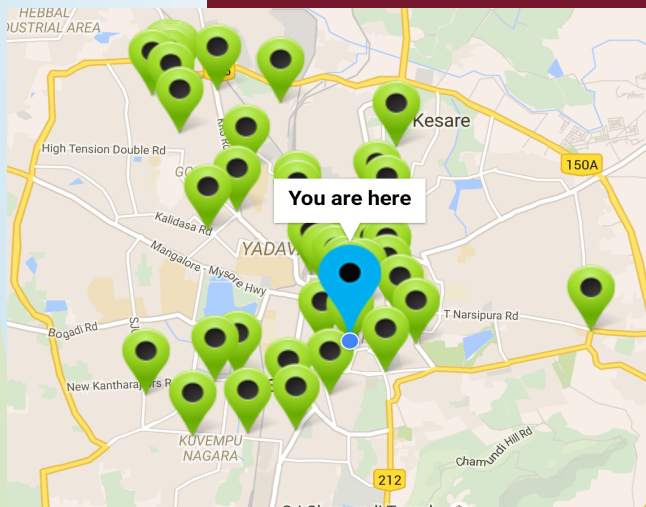
Drainage District	Location	Size	Pumping Machineries
A	Rayanakere STP Premises	11.50 Mtr dia RCC	150 HP – 2 No's 40 HP – 3 No's
D	H.D.Kote Road	13.70 Mtr dia RCC	154 HP – 2 No's 50 HP – 2 No's
B	Sewage Farm	8.00 Mtr dia RCC	125 HP – 2 No's 30 HP – 3 No's
	J.P.Nagar	4.50 Mtr dia RCC	10 HP – 2 No's
C	Hebbal	6.00 Mtr dia RCC	25 HP – 2 No's
	Siddiqui Nagar	6.00 Mtr dia RCC	10 HP – 4 No's
	Kesare	10.70 Mtr dia RCC	60 HP – 3 No's 25 HP – 2 No's

## PUBLIC TOILETS - 39

Public Toilets Maintained on BOOT basis	19
Public Toilets on Tendered basis	15
Free Public Toilets	5

Other than these, all tourist places, railway stations, bus stations have very good toilet facilities for the public

## COMMUNITY TOILETS - 11



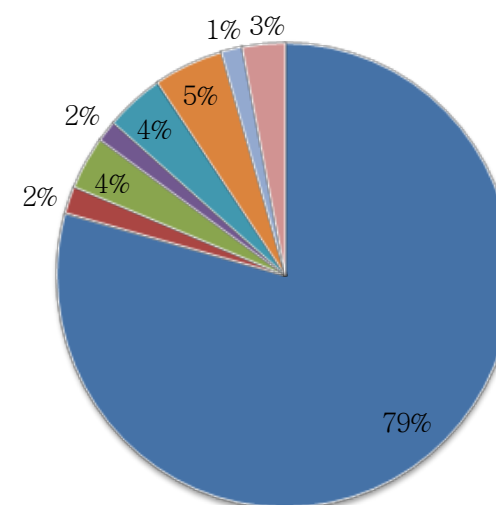
## INTENSIVE COMMUNITY TRIGGERING FOR ODF

- Carried as per the protocol suggested by MoUD, Gol
- Total 11 OD spots were identified
- On 19.04.2016 conducted focused community mobilization and triggering exercises near identified OD spots, to demonstrate the fecal – oral transmission route and trigger demand for toilets from the community
- Council Resolution passed on 26.04.2016 declaring 64 out of 65 wards as Open Defecation free wards
- Press note issued calling for public objections till 15.04.2016.
- So far no objections received, will be placed for final resolution before next Council.



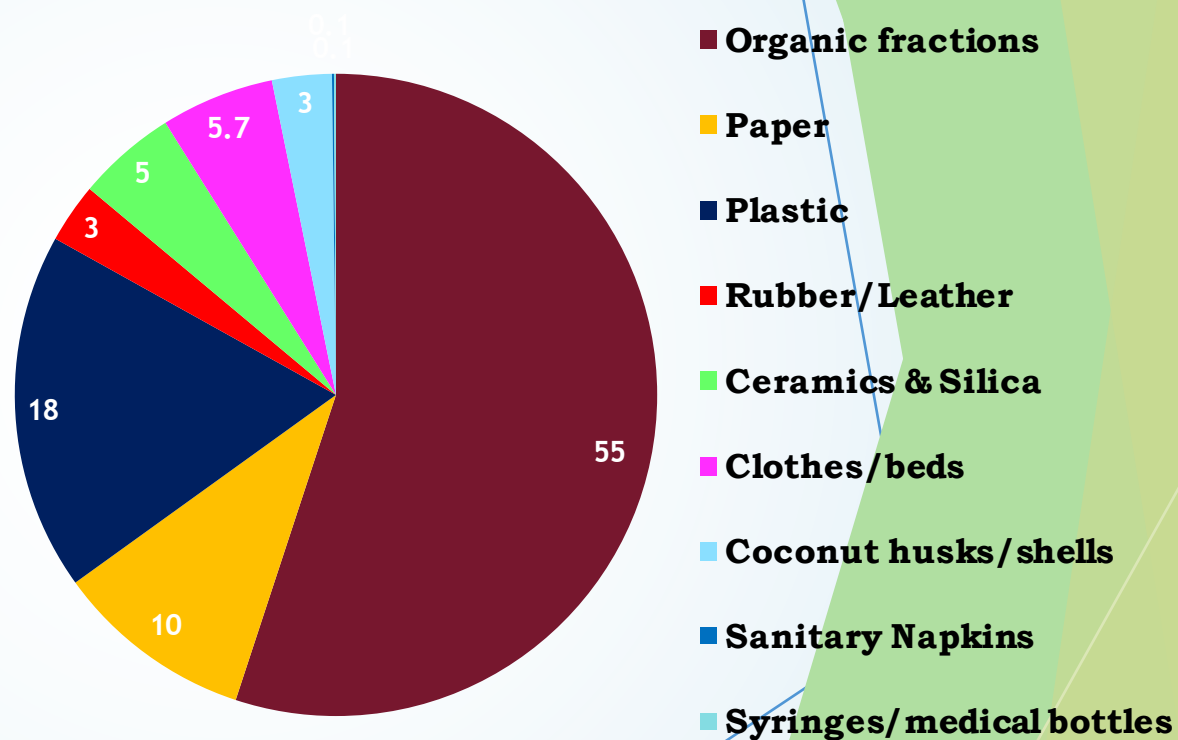
## QUANTITY OF WASTE GENERATED

SI No.	Particulars	Number of waste generators	Total waste in ton	Percentage
1	Population (households) including out growth	9,38,386	319	79.35
2	Commercial	19,923	8	1.9
3	Hotels and Restaurants	716	15	3.7
4	Marriage and function halls	124	6	1.5
5	Street sweeping	-	17	4.2
6	Garden waste	-	19	4.7
7	Chicken and mutton waste	406	6	1.5
8	Market waste	3	12	3.0
	<b>Total waste</b>		<b>402</b>	



# PHYSICAL PROPERTIES OF WASTE GENERATED

Sl No.	Composition	% of waste
1	Organic fractions	55
2	Paper	10
3	Plastic	18
	Rubber/Leather	3
4	Ceramics & Silica	5
5	Clothes/beds	5.7
6	Coconut husks/shells	3
7	Sanitary Napkins	0.1
8	Syringes/medical bottles	0.1



## VEHICLES DETAILS – SWM

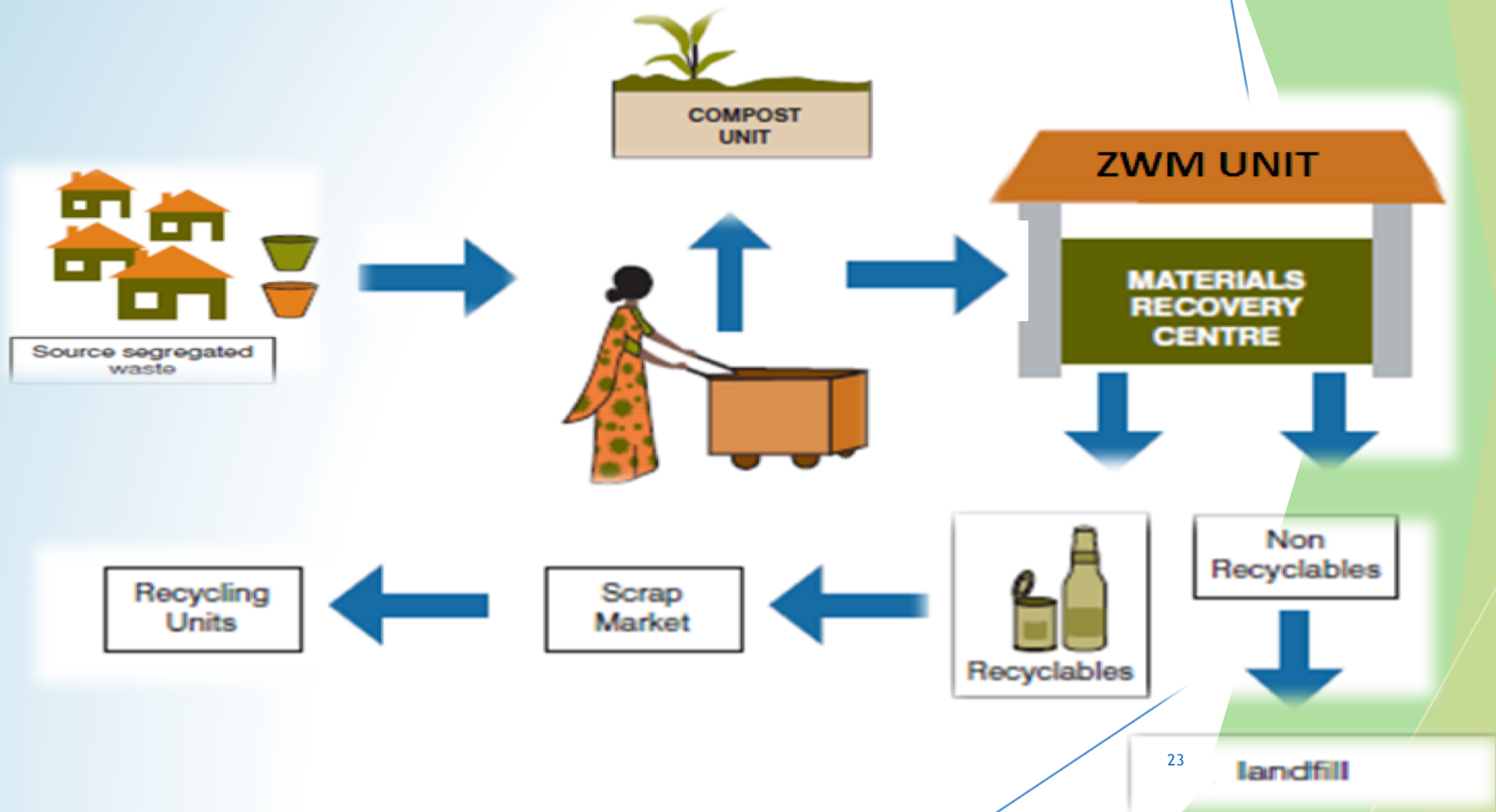
Sl No	Type of Vehicles	MCC Owned Vehicles	Out Source Vehicles
1	Tractor	23	01
2	Tipplers	07	27
3	Dumper placer	20	0
4	Compactor	04	01
5	Dog squad	01	0
6	Animal Waste Carrying Vehicle	07	0
7	Auto tipplers	168	0
8	Push carts	130	0
9	Sweeping machine Vehicles	01	0
10	Hitachi – ZX-120	01	0
11	Hitachi – ZX-80	01	0
12	Auto mounted Fogging machine	03	0
13	Weed cutting machine	38	0

## DETAILS OF WORKERS - SWM

Details	Permanent	Outsourced	Total
SWM	636	1645	2281
UGD	0	230	230
Total	636	1875	2511



# WASTE MOVEMENT IN MYSORE

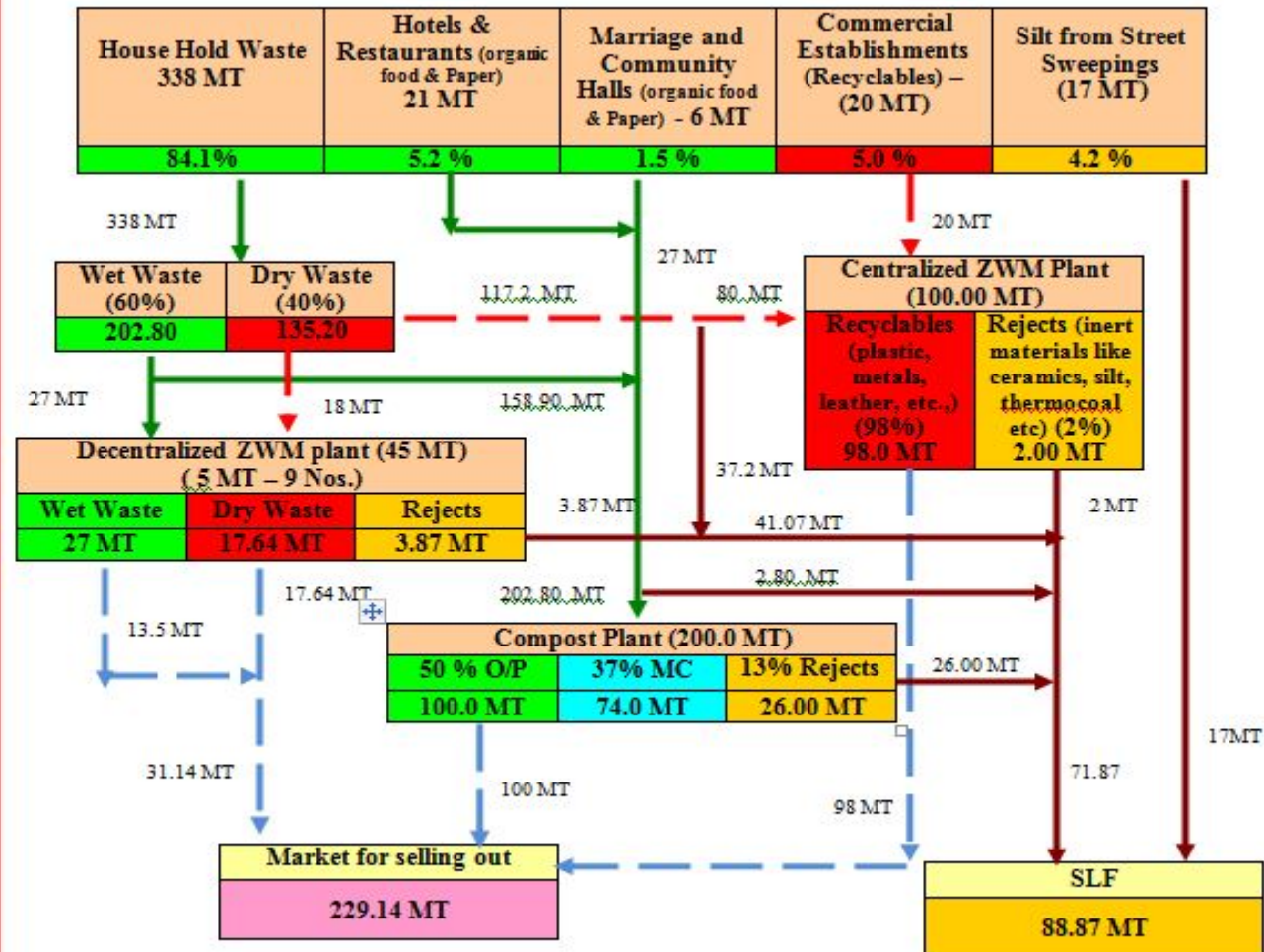


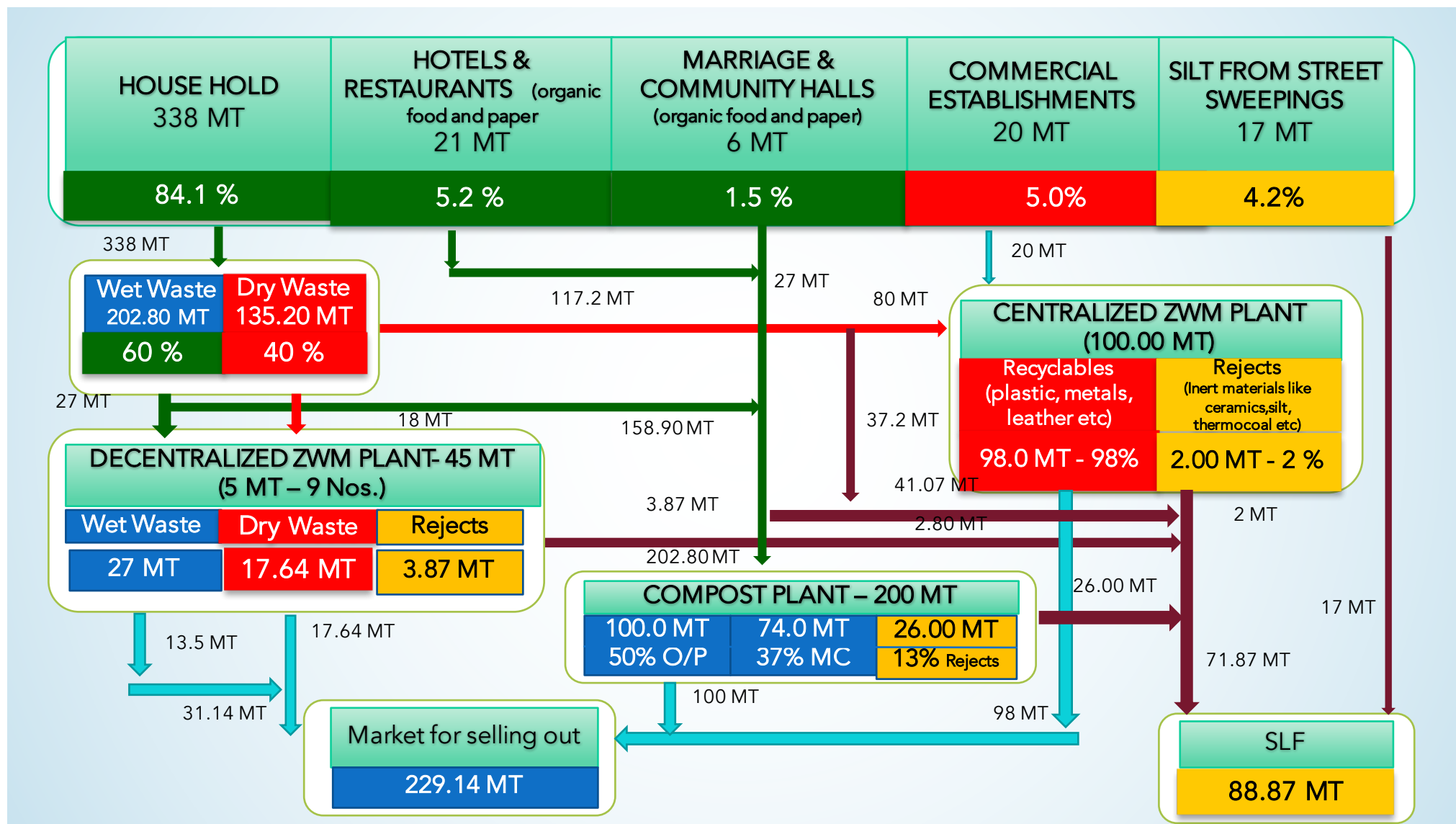
# WASTE MOVEMENT IN MYSORE

## Flow Chart



### Mass Balance – (385+17 MTPD)





## PRIMARY COLLECTION

### DOOR TO DOOR COLLECTION

- Implemented in all 65 Wards
- 62 wards - handled by 620 Outsourced labors.
- 3 wards – handled by federation of Mysore City Wards Parliament by engaging 30 workers
- 168 #s auto tippers and 396 pushcarts deployed for the waste collection.
- Chicken and mutton market wastes are being collected separately by 5 Auto tippers and one canter.
- 150000 color coded bins are distributed to the slum and BPL families to encourage segregation at household level
- Leaflets regarding segregation are distributed along with the bins.



## PRIMARY COLLECTION

### STREET SWEEPING ACTIVITY

- 17 wards – handled by 652 MCC pourakarmikas
- 1 ward – by Federation of Mysore City Wards Parliament by 22 workers (W-28)
- 47 wards – handled by 973 outsourced labours
- Street and drain cleaning activity during day time from 6.30 am to 2.30 pm
- Truck mounted street sweeping machine is being used for night sweeping of core area main roads
- Additional 1021 workers are required for cleaning activities



## SECONDARY COLLECTION

- 255 Nos. of single compartment containers , 130 Nos. of 4 compartment 4.5 cum containers are placed in all 65 wards for collection of wastes.
- 66 Nos. of 4.5 cum Skip Containers and placed in all 65 wards for collection of bulk waste from markets/choultry/Hotels etc.

20 Nos. of Dumper placers and 2 No of Compactors are used for transportation of secondary collected wastes.

55 Nos. of Tipper lorries ( Both MCC and Contractors vehicles) are used for transportation of street sweeping waste and silt.



- All SWM vehicles in MCC are monitored through GPS system
- Additional Compactors are required for effective transportation of garbage



|COMPARTMENT CONTAINER|



|SKIP CONTAINERS |

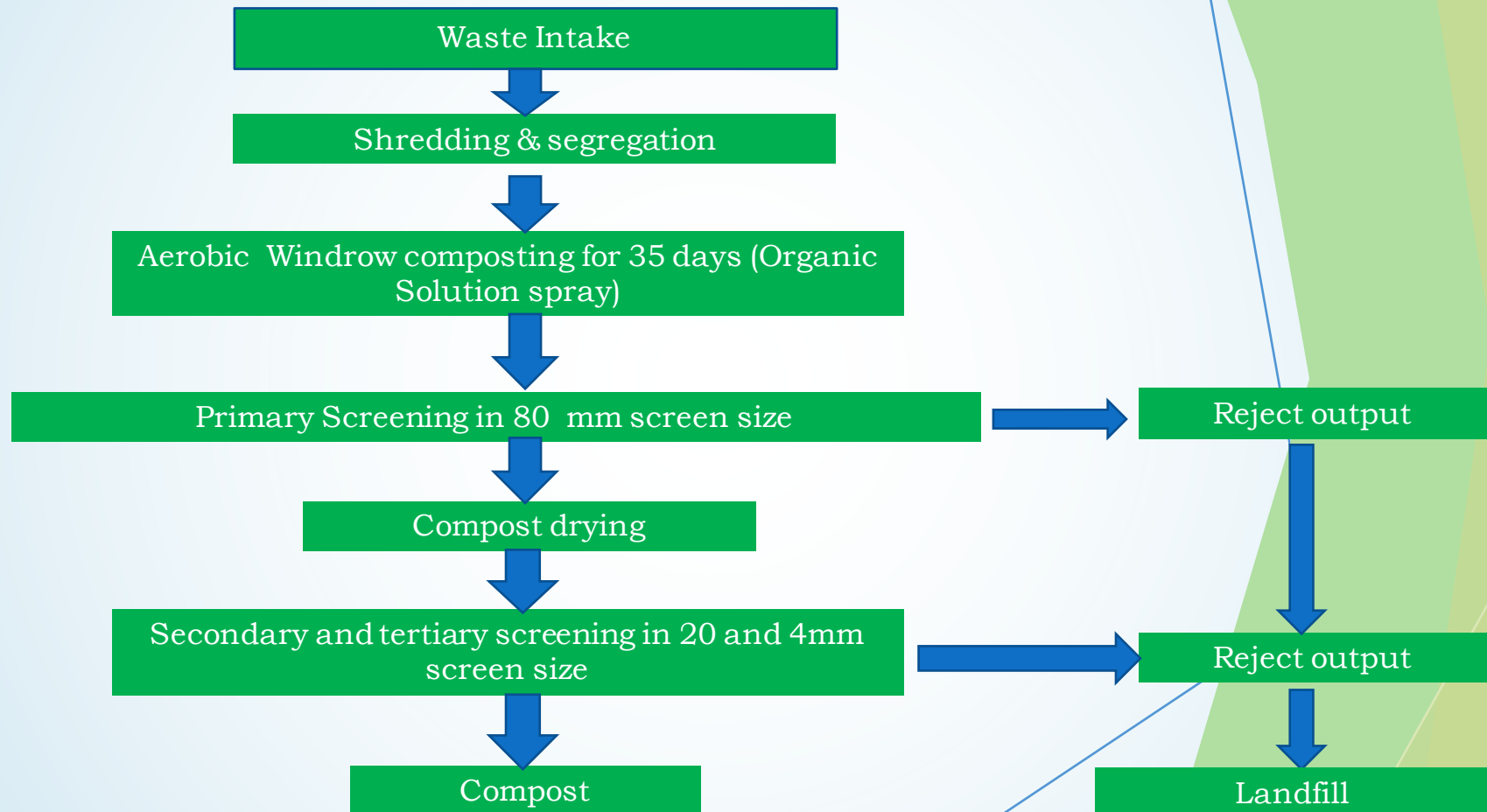


| DUMPER PLACER |



|14 CUM COMPACTOR|

## CENTRALIZED COMPOST PLANT - Mass Flow Composting



## **CENTRALIZED COMPOST PLANT**

- 200 tons capacity compost plant located near Vidyarayapuram was established in 2001 under ADB project
- Maintained by – IL & FS Company for O & M on PPP basis. Date of agreement 11.09.2008
- Around 175 TPD is treated daily, produce 30-35 MTPD of manure by following windrow composting method, 5% to MCC
- Land area 12.9 acres
- Extension period given till further tender process
- Rs 6 lakhs / year to MCC (land lease rent Rs.4.20 lakhs/annum and royalty Rs. 1.80 lakhs/annum)
- Essential culture is being sprayed daily to the incoming fresh garbage to avoid odor and vector
- About 26 ft barricade erected around the compost plant
- Around 6700 saplings are planted around the sewage farm
- As per the direction of MoUD, Tripartite agreement between MCC, IL & FS and Mangalore Chemicals & Fertilizers Ltd for the compost generated from the plant
- The company is having tie-ups with Coromandel, Zuari, SPIC, KRIBHCO for selling of city compost at a price of Rs. 2500 – 3000/MT.

# PROCESSING OF WASTE IN COMPOST PLANT

Segregation and shredding of waste



Screening



Windrows



Compost



PROCESSING WASTE  
AT COMPOST PLANT



PROCESSING WASTE  
AT COMPOST PLANT



FINAL STAGE OF WASTE  
PROCESSING

# WASTE TO WEALTH



**TRIPARTITE AGREEMENT OF COMPOST ON 5<sup>TH</sup> APRIL 2016**



# LAND FILL CONSTRUCTION

Sanitary landfill site is developed on PPP basis. **The first cell** of landfill is operational in an area of 5 acres.

**STEP 1** – Excavation of land to an average depth of 3.5 mts and compacting the surface.

**STEP 2** – Providing impervious bottom liners of 6mm thick Geosynthetic Clay liner and 1.5mm thick HDPE liner and above this 600mm clay

**STEP 3** – Installation of 110mm perforated HDPE pipeline network embedded in 200mm filter media for leachate collection and removal

**STEP 4** – Covering the leachate collection and removal system with the previous Geotextile and 200mm soil cushion.



## DETAILS OF ZERO WASTE MANAGEMENT UNITS

ZONE NO.	LOCATIONS ZERO WASTE MANAGEMENT	DETAILS OF SHG'S MAINTAINING THE ZMW UNITS
1	Vidhyaranyapuram	Shri Laxmi Swa Sahaya Sangha, Mysore.
2	Jayanagar	Solid and Liquid Waste Management Sangha, Mysore .
3	Mysore University	Mysore University
4	Gokulam	Gokulam Burial Ground.
5	Kumbarakoppalu	Federation of Mysore City Ward Parliament, Kumbarakoppalu, Mysore
6	Jodi Tengina Mara Burrial Ground	Jai Bharathi Samrudhi Samsthe, Mysore
7	Jodi Tengina Mara Burrial Ground	Sri Jayashri Nagara and Gramina Kshemabbhivruddhi Samsthe, Mysore
8	Old Kesare	Page Trust India, Mysore
9	Old Kesare	Page Trust India, Mysore

## SECONDARY SEGREGATION OF WASTE



## SEGREGATED WET WASTE



## SECONDARY SEGREGATION OF DRY WASTE



## SEGREGATED DRY WASTE



# ZERO WASTE MANAGEMENT UNITS



WASTE



WASTE SEGREGATION



COMPOSTING



DRY WASTE STORAGE



WASTE  
TRANSPORTATION



WASTE SEGREGATION



COMPOSTING



DRY WASTE STORAGE

## FEATURES OF ZWM MODEL

- **Decentralized:** Reduce load on centralized compost plant located at outskirts of the Mysuru city.
- **Cost-effective:** Saves money for city by reducing waste transport costs.
- **Energy efficient and environmentally sound:** will avoid mixing of segregated waste at secondary collection and transportation level and reduces waste sent to landfills.
- **High-resource recovery:** Enhances recycling of dry and wet wastes.
- **Labor friendly:** Makes use of available workers and improves their earnings and quality of work day.
- **Sustainable enterprise:** Cost and environmental benefits and availability of workforce make decentralized system administratively feasible.














## **DISPOSAL OF ANIMAL WASTE**

- About 500 Chicken, Mutton and Fish stalls
- All 500 stalls are chain linked and monitored through GPS
- Daily Animal waste is collected from each stall separately and disposed at Kesare through deep burial
- Plans are ahead for the construction of modern abattoir in the city for which estimate is sanctioned for 43.42 Crores



## MODERN ABATTOIR

PROPOSED SITE	 14 Acres of Land at the Northern out fall Farm, Kesare Survey No`s 490,499,500,504,505 & 506
TOTAL COST OF PROJECT	 Rs 39.90 crores Details  Rs -15 crores- MOFPI (GOI)  Rs -15 crores- Assistance from SUID  Rs – 5 crores – GOK budget  Rs – 4.90 Crores – Mysuru city Corporation
DPR Revised as per New SR Rates of PWD 2015-16	 Rs-43.42 Crores
CAPACITY OF THE PROJECT	 Small Animals - 1500 (Sheep & Goat)  Large Animals - 200 (cattle & Buffaloes)
FACILITIES	 Animal uploading ramp, lairages, Animal quarantine isolation pen, slaughter hall, custom built ETP, Solid waste management plant, rendering plant, Cold storage facility, Worker`s Amenity block, Etc.
CONSTRUCTION PERIOD	 18 Months

# MODERN ABATTOIR

<b>OBJECTIVES OF THE PROJECT</b>	<ul style="list-style-type: none"> <li>🎬 To stop illegal slaughtering and thereby reduce pollution and Environmental hazards.</li> <li>🎬 Scientific and hygienic slaughtering of animals</li> <li>🎬 Application of modern technology for slaughter waste management and pollution control</li> <li>🎬 More humane treatment of animals/minimizing transportation of animals</li> <li>🎬 Better by-product utilization / value addition</li> <li>🎬 To benefit the farmers to receive remunerative prices for their farm produce at the proposed animal market / animal mandi adjacent to the proposed service abattoir</li> </ul>
<b>PRESENT STATUS OF THE PROJECT</b>	<ul style="list-style-type: none"> <li>🎬 NOC issued by KSPCB and AIRPORT authority of India</li> <li>🎬 Officials of central pollution control board zonal office, Bangalore visited the site on 5<sup>th</sup> July 2014 and opined that proposed location generally meets all sitting criteria of CPCB &amp; KSPCB</li> <li>🎬 Member of Human Rights Commission visited the site on 13<sup>th</sup> December 2014 and also opined that proposed site is most ideal for modern abattoir</li> <li>🎬 Chief Engineer PWD given technical sanction for revised DPR.</li> <li>🎬 Proposal sent for DTS approval by DMA</li> </ul>

## SWM CESS

### 1] Residential Buildings

SL. NO.	PARTICULARS	RATE In Rs
1	Less than 1000 Sq.ft.	210-00
2	More than 1000 but less than 3000 Sq.ft.	720-00
3	More than 3000 Sq.ft.	1200-00

### 2] Commercial Buildings

SL. No	PARTICULARS	RATE in Rs
1	Less than 1000 Sq.ft.	1200-00
2	More than 1000 but less than 5000 Sq.ft.	2400-00
3	More than 5000 Sq.ft.	4800-00

### 3] Hotels and Choultry Buildings

SL. NO.	PARTICULARS	RATE in Rs
1	Less than 10000 Sq.ft.	7200-00
2	More than 10000 but less than 50000 Sq.ft.	12000-00
3	More than 50000 Sq.ft.	12000-00

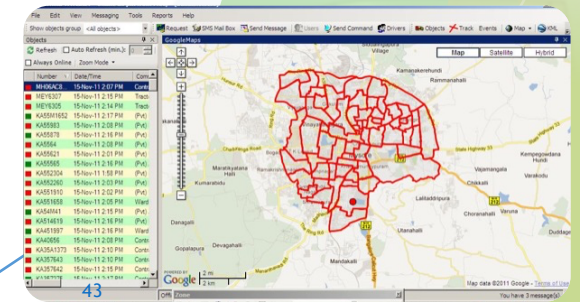
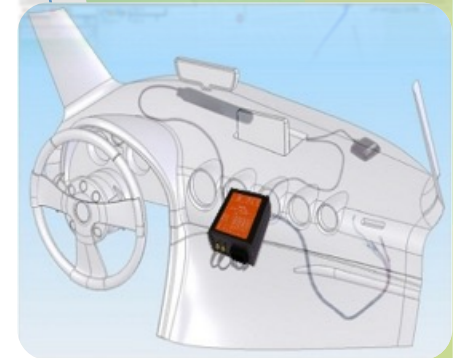
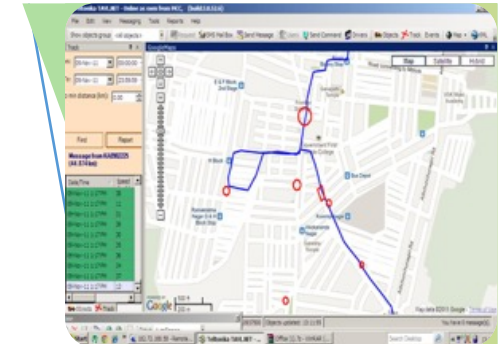
### 4] Industrial Buildings

SL. NO.	PARTICULARS	RATE in Rs
1	Less than 1000 Sq.ft.	2400-00
2	More than 1000 but less than 5000 Sq.ft.	4800-00
3	More than 5000 Sq.ft.	7200-00

NOTE: SWM Cess Demand is Rs. 500.00 lakhs.

# GPS BASED FLEET MANAGEMENT

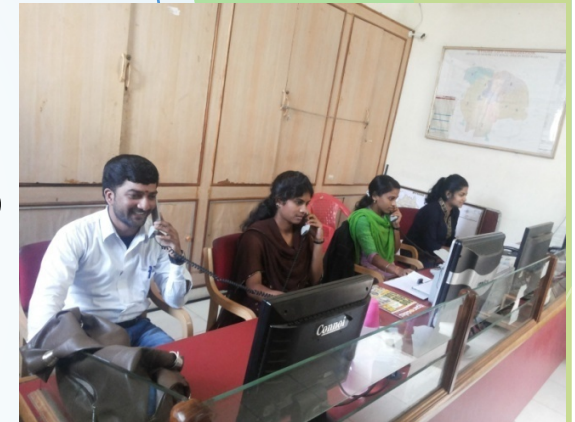
- A GPS integrated vehicle tracking system installed on a vehicle uses the GPS satellite signals through triangulation to calculate its precise location on earth. This information is then transmitted with the help of a GSM module to a centralized server with other vehicle parameters
- All 352 Vehicles are fitted with GPS device
- No. of trips, fuel consumption, collection of waste, Drivers attendance regularly monitored.
- AMC Contract given to M/s KALLATRA Technologies Pvt Ltd at a cost of Rs. 13.57 Lakhs



GEO - REFERENCING OF 65 WARDS

## COMPLAINT REDRESSAL

- MCC has established a round the clock Control room in order to attend the grievances of the public.
- The personnel in the Control room work 24X7 in 3 shift.
- The 24X7 Control room is equipped with Computers and wireless base stations.
- All the officers, Health Inspectors, Sanitary supervisors, UGD Inspectors, Environmental engineers and Civil engineers are provided with hand held wireless devices.
- Officials are provided with SIM cards under common user group scheme for an efficient communication.
- The public can call the control room over the phone and lodge their complaint or can lodge complaint through website .  
Phone Numbers – 0821-2418800, 2418816, 2440890, 2440891, 2440892, 2431112, 9449841191, 9449841192, 9449841195, 9449841196 and Toll free No. - 18002005822



# RAPID ACTION FORCE (ABHAYA)

- Mysuru City Corporation (MCC) has constituted a rapid action force, ABHAYA comprising of three teams working in two shifts to act during emergency situations such as flooding in low laying areas, tree fall, collapse of old structures etc.,
- Each team consists of six personnel and is provided with separate vehicles and necessary equipment / tools such as 10 HP suction pump, tree cutting machine, industrial torch etc.,
- The three teams operate in all the four assembly constituencies of the city.



## INFORMATION, EDUCATION, BEHAVIOR CHANGE AND COMMUNICATION ACTIVITIES (IEBC)

- Swachh Bharat Mission should become a mass movement. All Citizens / NGOs/Voluntary organization should actively participate in the movement .
- There is a need to change the mind set of public.
- MCC has used every platform to educate people on cleanliness and segregation of waste at source.
- Street plays
- An outsourced agency Techno mark television network private limited is engaged to conduct IEC activities for creating awareness to public on waste segregation.



## IEBC ACTIVITIES

- Theme based drives in the markets, schools, colleges, religious places, airport, railway stations, bus stands and bus stops, wards, parks, graveyards, toilets, offices, anganawadis, libraries, hotels, apartments, auto stands, heritage areas, factories and slums.
- Orientation to pourakarmikas regarding collection of segregated waste and collection of wet waste daily and dry waste on weekly basis.
- Beautification of the city along with cleanliness



## IEBC ACTIVITIES

- Video and audio jingles played in local TV channels, Theatres, Functions and Dasara festivities.
- WhatsApp messages
- Pledge regarding segregation and cleanliness taken by all officers, elected representatives, students and general public
- Workshop for hotel owners, Choultry, Apartments and associations
- ITS of KSRTC extensively utilized for conveying the cleanliness messages – In all 430 buses, 5 bus terminals and 167 bus shelters



### PLEDGE

"I, C.G.Betasurmath, Commissioner, Mysuru City Corporation, Commit that i will not throw any garbage or waste on road, street, vacant sites and in drains, but will put only in dustbin or location provided for the same. I will also segregate wet & dry waste at source and hand it over to the collector. I will say no to plastics. I shall also spread this message amongst all my near and dear ones and my neighbours and do the best to preserve and protect my environment."



## IEBC ACTIVITIES

- Removed hoardings / Regularly removed cinema posters, pamphlets, posters, hand bills pasted on the public places and cases have been booked under the Karnataka Open Places (Prevention of Disfigurement) Act 1981
- Stickers and pamphlets have been distributed to the students – Desk and Geometry boxes
- Signage depicting cleanliness messages put-up in medians
- 40 Hoardings put-up in the across the city in different locations.
- Car stickers and household stickers released on 6th January 2016 by SWM Ambassadors .
- Awareness Rallies
- Door to Door awareness
- Meetings with SHGs/NGO/RWA and other



## IEBC ACTIVITIES

- During world famous nine days Dasara Festivities audio and video jingles were displayed near the stage of cultural events. During the dasara procession tableau with digital display on the theme of cleanliness attracted lakhs of viewers.
- 2 lakhs of pamphlets on waste segregation have been distributed to the households, 1 lakh book stickers, desk stickers, 50,000 geometry box stickers, 10,000 badges conveying cleanliness messages and 2 lakhs of swachh bharat pledges have been distributed to the schools and colleges
- 32 dry waste collection centres are ready to open in different wards



## IEBC ACTIVITIES

- All Theme based cleanliness drives conducted with full support and involvement of District Collector. Corporation officers & officials and general public.
- Public have been informed about the mandatory provisions of segregation of waste at source and also their roles on SWM through media .
- Radio Talk, TV discussions ,Live Phone-in programmes



## **PLASTIC FREE CITY – INITIATIVES BY MCC**

- Complete ban on plastic. Plastic use discouraged in entire City & District
- Raids conducted by MCC on wholesale retail points & shops
- District Collector conducted meeting with all District level officers to strictly ban and discourage plastic usage.
- MCC office, zonal offices and all District , Taluk and Panchayat level offices are made plastic free.
- Quantity of Plastic waste generated (TPD) – 18% of total waste (72.36 Tonnes)
- Date of Council resolution for adoption of PWM Rules 2011 – 18.03.2011
- Number of plastic collection centers in the ULB – 9 ZWM units are also being used as plastic collection centres, 32 dry waste collection centres are ready to open.



## PLASTIC FREE CITY – INITIATIVES BY MCC

- Number of rag pickers indentified /used in PWM – 37  
numbers of rag pickers identified
- No. of raids conducted - 162
- No. of violations observed – 115
- Amount collected towards the fine – Fine of Rs. 42,700 /- is imposed.
- Alternatives to plastic identified and encouraged



## PLASTIC RAID BY MCC



## GOAL TOWARDS SWM

- MCC now is following “Four R Principle”
  - 1) Refuse unsegregated waste at source and penalize those littering outside,
  - 2) Reduce at source using new technologies and following best practices. Apartments/hotels/ chowtries and bulk generators are coming forward to have their own SWM units. Individuals have taken up the initiative of converting waste into compost/biogas and use for their own purposes
  - 3) Recycle and
  - 4) Reuse.



**REFUSE  
REDUCE  
RECYCLE  
REUSE**

## AWARDS & RECOGNITIONS

- **Award for excellence in SWM** - Awarded by MOUD on 4-11-2009 in ICONSWM, organized by Center for Quality Management System, Jadavpur University, Calcutta.
- Union Ministry of Urban Development awarded Mysore City Corporation as **“second clean city”** in May 2010 considering parameters like -maintaining cleanliness, disposal of solid waste, maintenance of UGD system, rain water harvesting, rejuvenation of lakes, door to door collection of waste, public toilets and other parameters.
- **Best Urban Local Award 2009-10:** In recognition of the best performance in Municipal Service delivery as evaluated through Service Level Bench Marking Project, MCC was ranked under City Corporations for the Year 2019-10 and awarded with Rs.10 lakhs cash Prize.
- **Best practices Award 2010:** In recognition of the initiative “community participation Initiatives” Ranked first under Corporation Category amongst :Initiative in Urban Sector – Karnataka- 2010” and awarded with 56 Rs.3lakhsCashPrize.

## AWARDS & RECOGNITIONS



- **“Award for excellence”: In Appreciation of Participation in Municipalika-2011 9<sup>th</sup>** International Exhibition on “Urban Infrastructure, Municipal Services and Built-Environment” Bangalore on 27-29<sup>th</sup> January 2011. Urban Development Department of Karnataka State Awarded Mysore City Corporation as First “ Best Clean City” on 01-02-2011 with Rs. 10 lakh
- Best Practice Award 2010(Community Mobilization under CPF)” – Awarded Mysore City Corporation for Best Practice Award 2010 under “City Corporation Category “ in Feb 2011 by UDD in association with CMAK. **“Award for Cleanest City “** – Awarded Mysore City Corporation as First clean city in May 2011 by “Greenleaf”, Hyderabad.
- **“Award for Best Performing Municipal Corporation”** – Mysore City Corporation has been awarded as 2<sup>nd</sup> Best Performing Municipal Corporation under JnNURM. The Hon’ble president of India on 8<sup>th</sup> July 2011 presented the **“Nagara Rathna”** award at Mumbai

## AWARDS & RECOGNITIONS

- **Award for Best Environmentally Sustainable City** – Awarded Mysore City Corporation for 1<sup>st</sup> Best Euro India Environmentally Sustainable City (ESCA) on 13<sup>th</sup> Oct 2011 in Belgium organized by Euro India Centre.
- **ICON SWM 2011 Award - for Best overall performance in Solid Waste Management-** on 11<sup>th</sup> November 2011 organized by International Society for Waste Management, Air, Water.
- **India Today Study Group Award:** Mysore City Corporation awarded with Best Emerging City Award 2014 for Cleanliness, Environment and Entertainment.
- **Cleanest City of India Award 2015:** Mysuru City was ranked number 1 Cleanest City of India among 476 cities and towns across the country by MoUD, Gol.
- **Cleanest City of India Award 2016:** Mysuru City is ranked number 1 second time in a row the first Cleanest City of India among 73 million plus cities in the country by MoUD, Gol.



## **CHALLENGES AHEAD**

- **To achieve 100% segregation at source to ensure easy recovery of resources.**
- **To develop more awareness among the citizens on segregation and value recovery.**
- **Upgrade the existing Vidyaranyapura facility for handling 200 TPD of mixed waste.**
- **Setup new composting facilities for 100 TPD at Rayankere and 200 TPD at Kesare using segregated wet waste components from the city.**

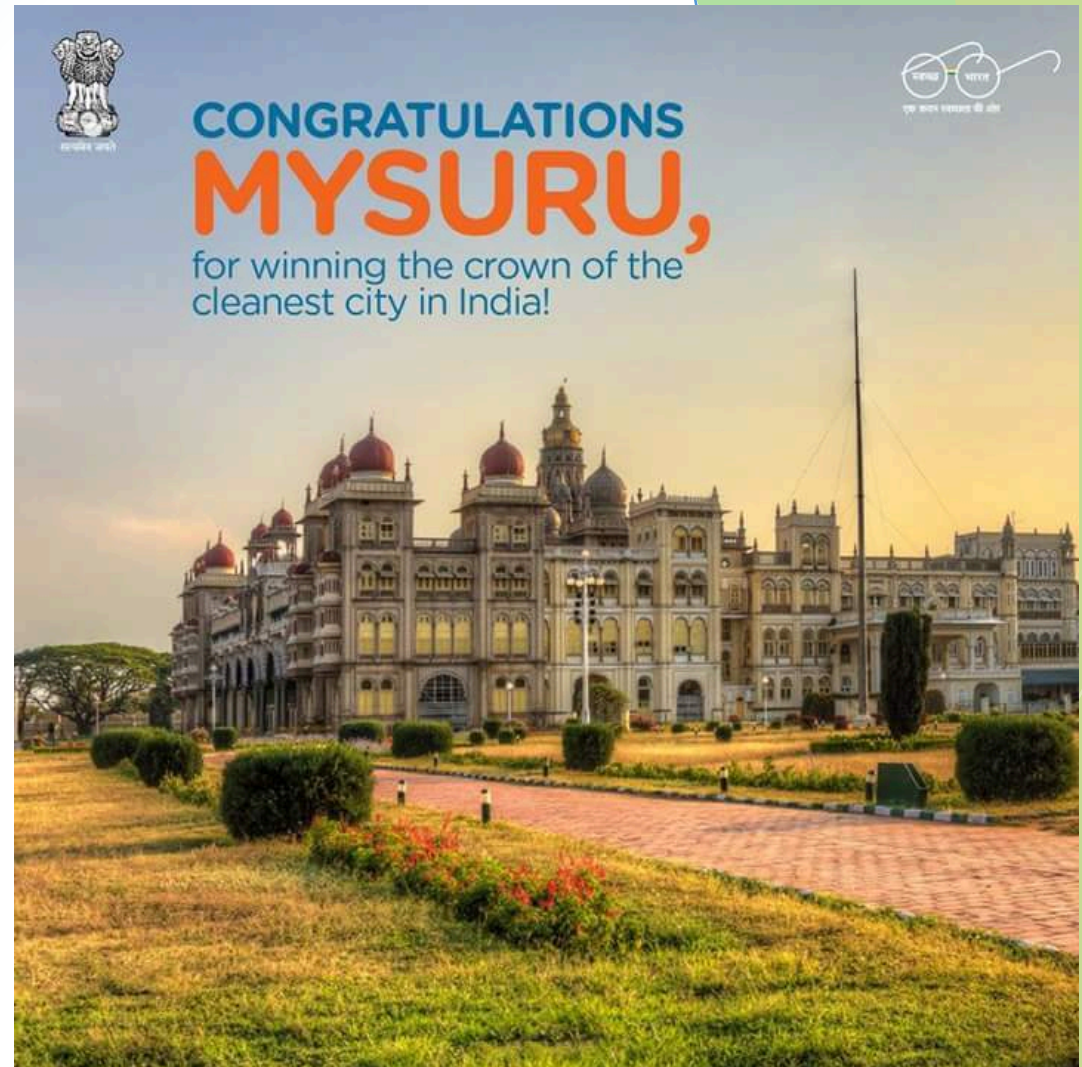
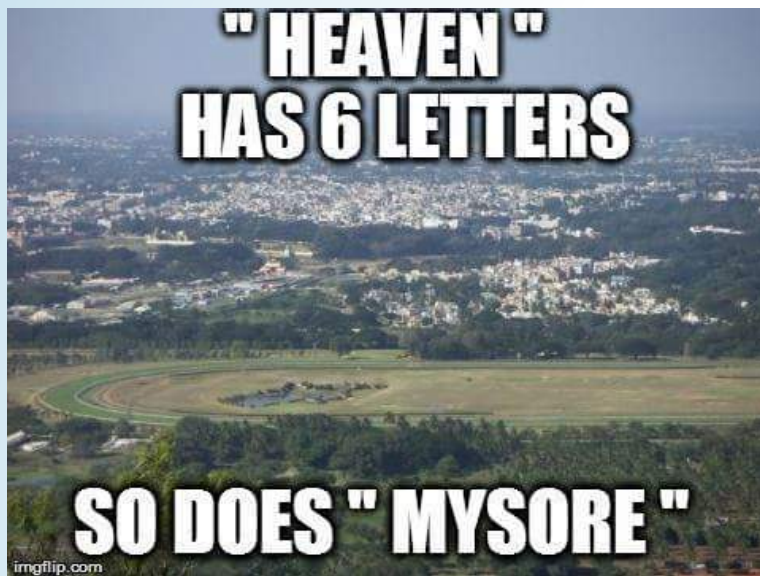
## CHALLENGES AHEAD

- **Setup 300 TPD per day segregated RDF waste power plant on Build Own Operate model. The MCC is working towards tendering for such a facility.**

**The decentralized facilities being planned as part of the C & T detailing would include bio-methanation plant of 5 tons capacity linking vegetable markets and hotels.**

- **The proposed composting facilities would be a part of overall concept of recovering valuable carbon for agriculture and generation of power using RDF material left out.**

## SNIPETS









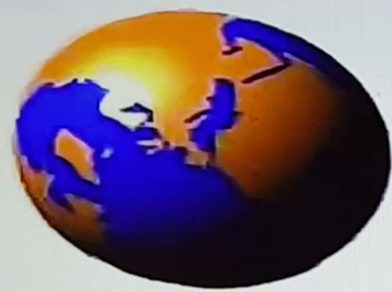












**CNN**

**IBN**



**#CNNABF2016**



IBNL

Refuse,  
Reduce,  
Recycle,  
Reuse



I will  
**Salute**  
if you don't  
**Pollute**



ಮೈಸೂರು ಮಹಾನಗರ ಪಾಲಿಕೆ, ಮೈಸೂರು  
MYSURU CITY CORPORATION, MYSURU



*Thank you*